



Financial Statements

Date: May 2022

PARKWAY SCHOOL DISTRICT
MONTHLY FINANCIAL REPORT
TABLE OF CONTENT

<u>DOCUMENT</u>	<u>PAGE</u>
EXECUTIVE SUMMARY.	1 - 2
GRAPHS - REVENUE, EXPENDITURE, CASH, AND FUND BALANCE .	3 - 5
RECAPITULATION OF FUNDS	6
ACCRUAL BALANCE SHEET.	7
BREAKOUT OF CASH AND INVESTMENTS	8
GRANTS FROM CARES ACT : COVID-19	9
MODIFIED ACCRUAL REVENUE SCHEDULE	10
EXPENDITURE SUMMARY BY OBJECT	11
FOOD SERVICE	12
EXPENDITURE SUMMARY BY BUILDING	13
EXPENDITURE SUMMARY BY PROGRAM	14 - 21
GLOSSARY	22 - 23
PURCHASING REPORTS	24 - 37



TO: Board of Education

DATE: June 15, 2022

FROM: Patricia Bedborough, CPA

RE: Executive Summary May 2022

Abstract

The May financial statements are attached. Our cash position remains strong. Our Property tax collection was higher in May than it was for the same month last year with the taxes paid under protest received in May this year and not in June as last year. Proposition C or sales tax revenues are greater than last year with the change in the sales tax collected and the higher cost of purchases statewide. There is an increase in federal funding versus last year as well. This increase in Federal Funding is due to our stimulus funding and our food service revenues from the federal program and the beginning of the ESSER II and ESSER III reimbursements. Our largest challenge we are facing currently is the lack of staffing in many of our support staff positions. The salary expenditures are higher than last year as planned. This is a reflection of last year having a small summer school and a larger one this year in addition to last year we offered the voluntary furlough. In addition, we are paying for a great deal of overtime for our custodial and our maintenance staff based on our staffing shortages. You will notice that our energy costs have increased over last year. This is a reflection of our buildings being occupied this full year. When you look specifically at the food service fund balance, you will see that while we still have a negative fund balance, this year we have significantly reduced the negative balance. We have very high participation for both breakfast and lunch in comparison to the 19-20 school year in addition to a higher federal reimbursement rate.

Future Issues

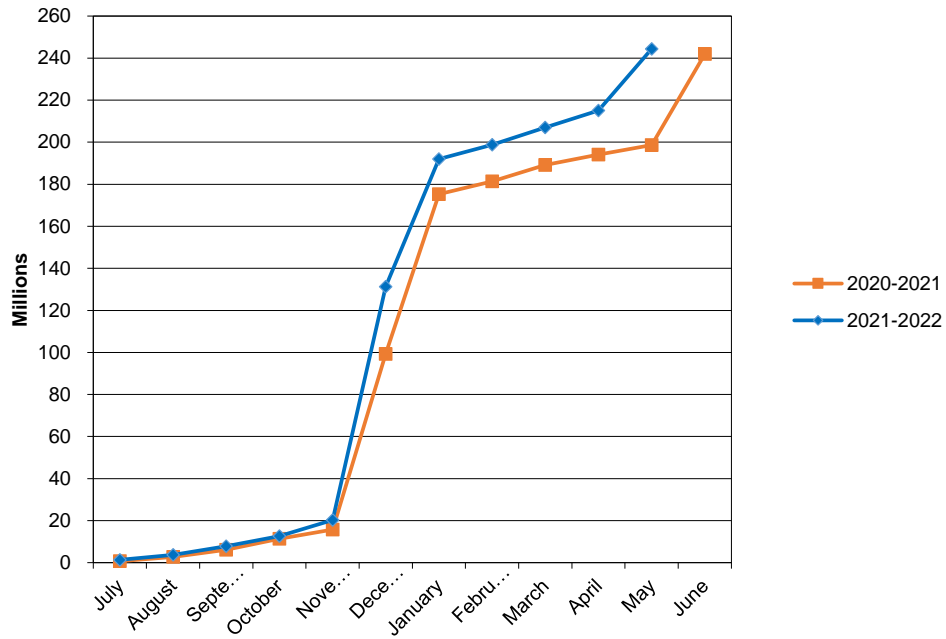
The following issues are still pending and could affect district finances in the future:

1. Health Insurance Costs – Health costs are a large portion of our benefit expenses. Our pharmacy benefit manager is through Business Health Coalition and we have substantial savings over market trends for our pharmacy. We have opened our near site clinics for our employees and staff effective August 2018. We had no increase in our premiums for 2019 and 2020 followed by a 1% reduction in costs for 2021. We have approved a 2.5% increase in premiums for 2022. Our wellness programs are very strong.
2. Commercial Property Assessments Appeals – As you are aware this has been a struggle over the last several years. We have seen our collection rate fluctuate due to these settlements. We worked with the state auditor's office last year and have approved \$3.2 million in recoupment. Included in this year we have levied .0583 to the capital projects fund from our prior year's recoupment calculations. Our collection rate continues to be around 96%.

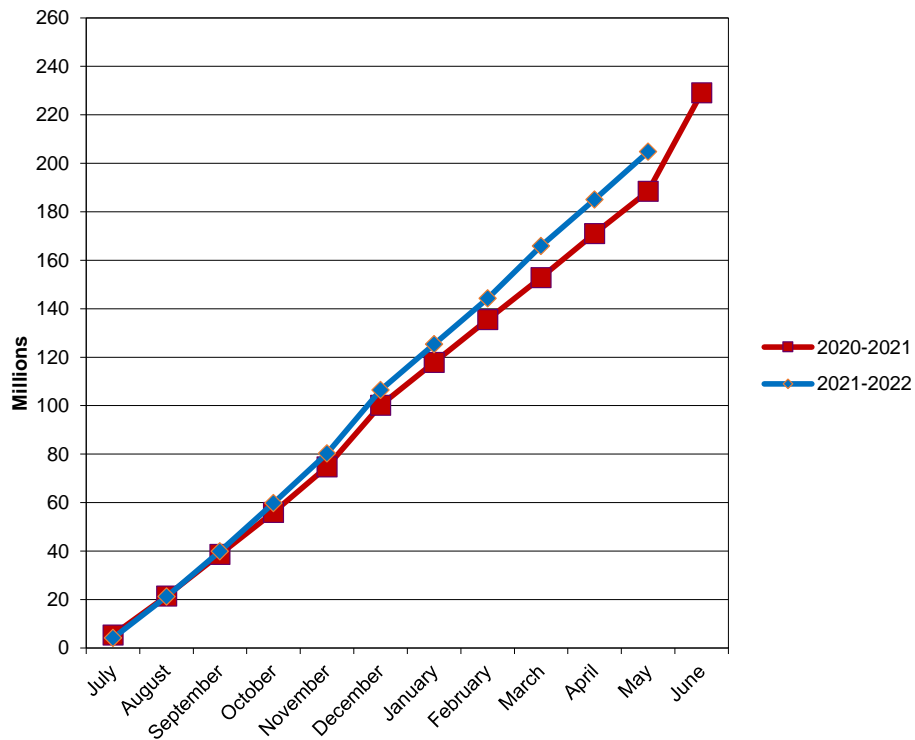
3. New Construction Assessments - In September we received our final amounts from St. Louis County. We had another strong year with new construction with just over \$20 million in commercial and residential property and \$54 million in new personal property.
4. Interest Income –Our interest from our banking account is nearly nothing due to the Fed's lowering the treasury rate.
5. State Revenue –DESE will be basing our formula calculation on our attendance from two years ago. With the pandemic, our lowest attendance year was last year.
6. Spot Market Purchases – For information purposes, fiscal year-to-date purchases under the spot market procurement policy are as follows:

Fuel (Facilities)	\$	191,680.93
Fuel (Trans)	\$	261,080.40
Paper	\$	119,630.80
Trash Liner	\$	93,816.00
Produce:	\$	N/A

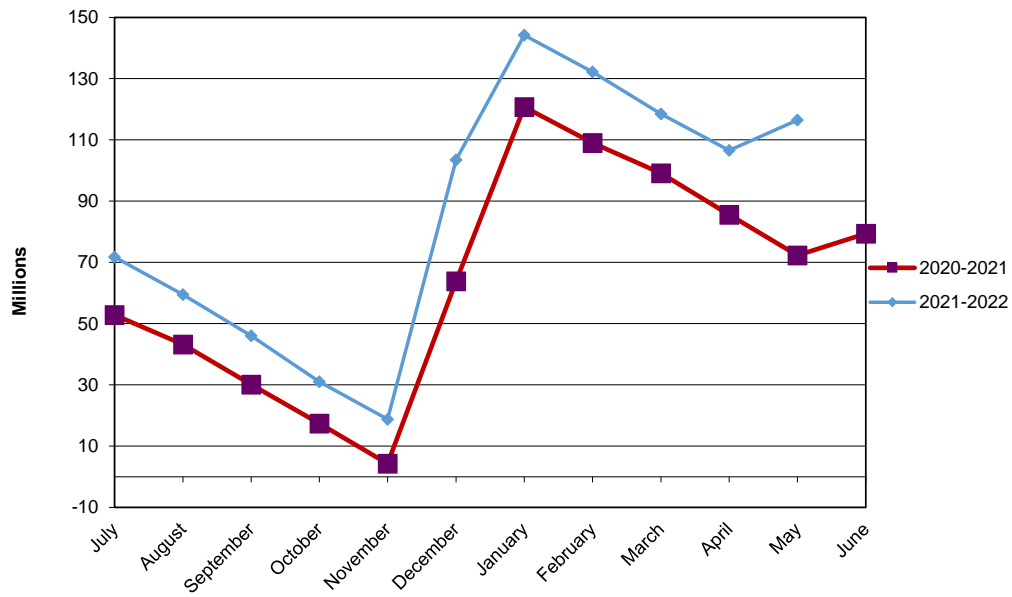
PARKWAY SCHOOL DISTRICT ACTUAL OPERATING REVENUE

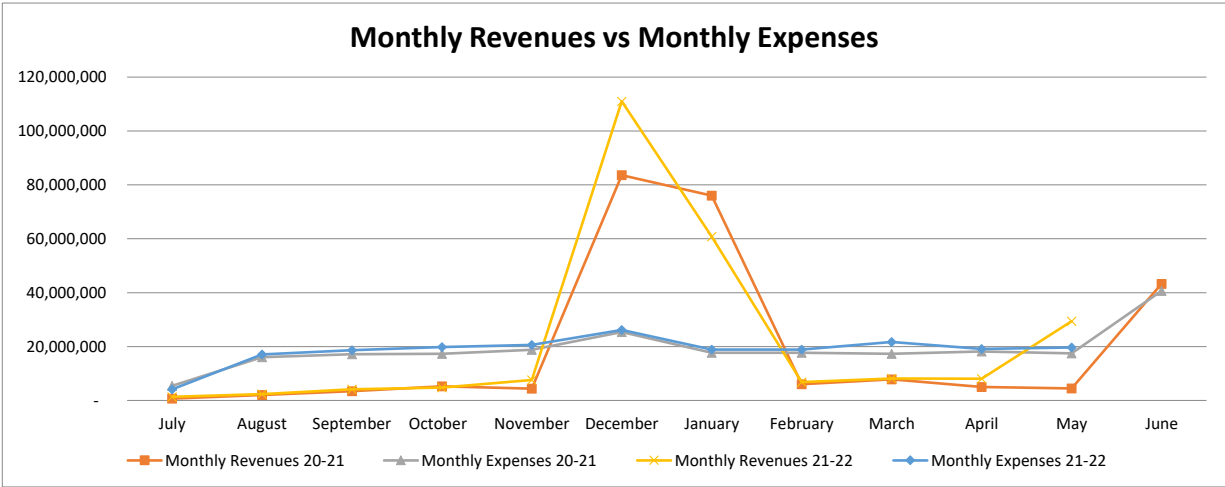
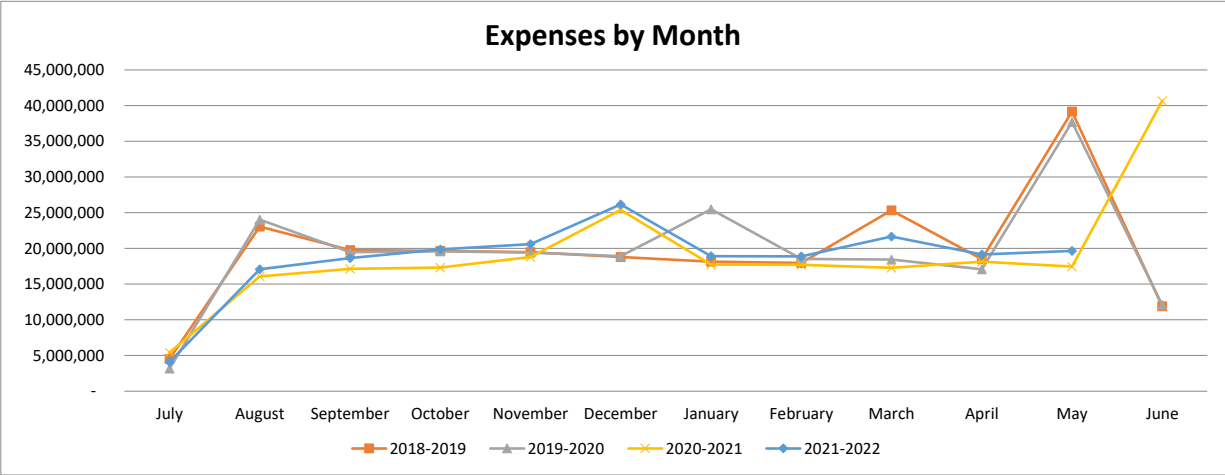
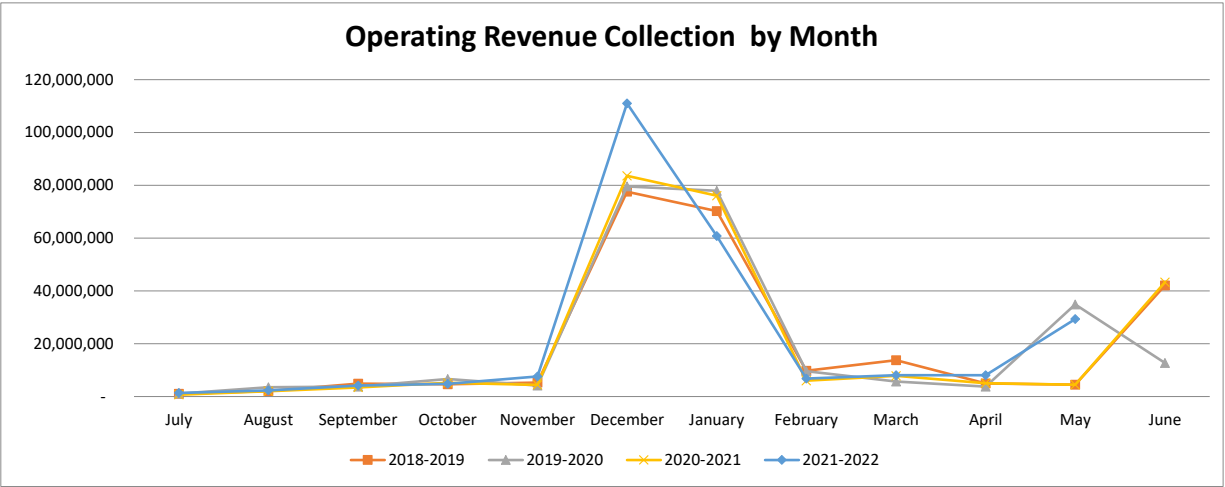


PARKWAY SCHOOL DISTRICT ACTUAL OPERATING EXPENDITURES



PARKWAY SCHOOL DISTRICT OPERATING FUND CASH AND INVESTMENTS





**Parkway School District
Recapitulation of Funds
Budget 2021-2022 With Restatement of Opening Balances**

FY2022 Full Year Budget

	Operating	Debt Service	Capital Projects	2014 Bond Issue	2018 Bond Issue	All Funds
Beginning Fund Balance	65,601,989	13,979,499	15,033,182	-	57,786,000	152,400,670
Revenues	260,977,497	27,104,873	4,200,620	-	100,000	292,382,990
Expenses	251,591,911	24,362,056	4,967,134	-	35,000,000	315,921,101
Transfers	(2,250,000)	-	2,250,000	-	-	-
Ending Fund Balance	72,737,575	16,722,316	16,516,668	-	22,886,000	128,862,559

ACTUAL FY22 THROUGH 5/31/22

	Operating	Debt Service	Capital Projects	2014 Bond Issue	2018 Bond Issue	All Funds
Beginning Fund Balance	65,601,989	13,979,499	15,033,182	-	57,786,000	152,400,670
Revenues	244,395,085	27,173,532	3,412,201	-	111,692	275,092,510
Expenses	204,759,628	24,347,903	3,335,503	-	13,300,672	245,743,706
Transfers	-	-	-	-	-	-
Ending Fund Balance	105,237,446	16,805,128	15,109,880	-	44,597,020	181,749,474

ACTUAL FY21 THROUGH 5/31/21

	Operating	Debt Service	Capital Projects	2014 Bond Issue	2018 Bond Issue	All Funds
Beginning Fund Balance	55,794,538	11,259,389	15,565,447	341,572	21,542,797	104,503,743
Revenues	198,640,993	21,699,015	408,607	1,006	60,632,013	281,381,634
Expenses	188,460,008	22,776,299	3,559,827	338,831	20,610,295	235,745,260
Transfers	-	-	-	-	-	-
Ending Fund Balance	65,975,523	10,182,105	12,414,227	3,747	61,564,515	150,140,117

**PARKWAY SCHOOL DISTRICT
ACCRUAL BALANCE SHEET
May 31, 2022**

	TOTAL- ALL FUNDS 5/31/2022	TOTAL- ALL FUNDS 5/31/2021
ASSETS		
Cash & Investments	\$ 202,605,749	168,698,063
Accounts Receivable	939	20
Inventories	1,069,888	1,267,893
Prepaid Expenses	3,344,669	1,684,539
Land	3,457,837	3,457,837
Land Improvements	16,122,147	17,321,487
Buildings/Improvements	195,589,218	198,567,464
Construction in Progress	50,124,673	39,597,056
Equipment	11,110,190	11,248,236
	<hr/>	<hr/>
Total Assets	\$ 483,425,310	441,842,595
LIABILITIES & FUND BALANCE		
Accounts Payable - Operating Funds	\$ 4,402,194	1,421,747
Accounts Payable - Bond Issue Funds	227,077	2,598
Accounts Payable - Medical Fund	11,177	-
Wages, Payroll Taxes, and Benefits Payable	3,846,018	3,340,929
Bonds Payable	243,765,000	203,435,000
Interest Payable	2,702,497	2,475,953
Liability for Compensated Absences	1,766,400	1,731,286
Liability for Early Retirement	26,418	63,015
	<hr/>	<hr/>
Total Liabilities	\$ 256,746,781	212,470,528
Bond Issue Fund Balance	44,597,020	61,568,262
Debt Service Fund Balance	16,805,128	10,182,105
Capital Projects Fund Balance	15,109,880	12,414,227
Equity in Fixed Assets less Long Term Liabilities	28,143,750	62,486,826
Medical Fund Balance	16,785,305	16,745,124
Operating Fund Balance	105,237,446	65,975,523
	<hr/>	<hr/>
Total Fund Balance	\$ 226,678,529	229,372,067
TOTAL LIABILITIES & FUND BALANCE	<hr/> \$ 483,425,310 <hr/>	<hr/> 441,842,595 <hr/>

BREAKOUT OF CASH & INVESTMENT BALANCE

	<u>5/31/2022</u>	<u>5/31/2021</u>
MEDICAL FUND CASH	16,796,479	16,745,122
DEBT SERVICE FUND CASH	9,396,730	10,217,195
DEBT SERVICE FUND INVESTMENTS	7,443,488	-
BOND ISSUE FUND CASH	44,369,943	61,533,709
CAPITAL PROJECTS FUND CASH	8,141,073	7,926,217
OPERATING FUND CASH	31,129,849	72,267,601
OPERATING FUND INVESTMENTS	85,328,187	8,219
TOTAL	202,605,749	168,698,063

RESTRICTED RESERVE

	<u>5/31/2022</u>	<u>5/31/2021</u>
FOOD SERVICE	(595,669)	(2,068,041)
MEDICAL BENEFITS	16,785,305	16,745,124
STUDENT ACTIVITY	3,419,760	3,213,693
TOTAL	19,609,396	17,890,776

Grants from Covid-19 Stimulus Funds

Grant	Award	Received	Spent through 5/31/22	Status	Description
Cares Act - ESSER	875,664	875,644	875,664	approved - fully received and fully spent Districts portion. Some non publics are finishing their portion still.	Utilized for salaries and benefits during closure. \$190,000 of grant is for non public schools.
Coronavirus Relief Fund(CRF)	1,199,707	1,199,707	1,199,707	approved - fully received and fully spent	Grant expenses include PPE, care coordinators and digital learning expenses. \$77,389 of this grant will be paid to VICC.
Covid-19 Response Supply Grant	502,883	502,883	502,883	approved - fully spent and received	This grant is a 75/25% split between the County and state. PPE, partitions and sanitation supplies were applied against this grant.
FEMA	174,932	-	233,243	approved - spent but not received	Reimbursed 75% of PPE supplies and some custodial over time from 3/17/20 to 9/15/20. Grant reimbursed at 75% of expenses, a total of \$233,243 in expenses were submitted with a projected reimbursement of \$174,932
Student Connectivity Grant - B	112,000	112,000	112,000	approved - fully spent and received	Grant is a 50% reimbursement for hot spots
Transportation Supplement	153,918	97,843	97,843	Submitted a request for reimbursement in early August 2021	Grant is primarily for transportation PPE and sanitation supplies and summer school expenses for buses. Have until 9/30/22 to spend the funds.
Cares Act - unemployment	TBD	178,482	356,964	This is auto applied to our unemplo	Reimburses District for 50% of unemployment expenses
County Early Cares Child Care Reponse Program	100,950	100,950	100,950	approved and fully spent	Costs incurred to child care facilities in St. Louis County for business interruption expenses and compliance with health and safety measures
ESSER II	5,361,260	1,728,739	1,996,636	DESE recently opened the reimbursement requests for this grant. We are in the process of requesting reimbursement	Uses include PPE, air quality improvements, digital learning expenses, sub costs related to COVIDS absences, contact tracers, counselors and care coordinators over the next two fiscal years.
ESSER III*	11,897,669	1,502,645	1,805,909	DESE recently opened the reimbursement requests for this grant. We are in the process of requesting reimbursement	Similar to ESSER II with the addition of summer school expenses, reading specialist, and instructional coaches. Have until 9/30/24 to spend the funds. 20% of the grant must address learning loss.
Teacher Retention Grant	615,000	365,657	500,000	approved - mostly spent. Waiting on legislature approval for part of reimbursement	Used for stipends and future scholarships
Totals	20,378,983	6,298,893	7,281,799		

PARKWAY SCHOOL DISTRICT
MODIFIED ACCRUAL REVENUE SCHEDULE
TOTAL ALL FUNDS

	YEAR TO DATE 5/31/2022				YEAR TO DATE 5/31/21				CHANGE FROM PRIOR YEAR	
	BUDGETED	REVENUE	%	BALANCE TO	REVENUE**	REVENUE	%	BALANCE TO	\$	%
	REVENUE	REALIZED	REALIZED	BE REALIZED	6/30/21	REALIZED	REALIZED	BE REALIZED		
LOCAL										
Property Taxes	185,688,328	186,869,634	100.64%	(1,181,306)	185,056,912	155,990,211	84.29%	29,066,701	30,879,423	19.80%
Delinquent Property Taxes	-	-	0.00%	-	819,182	-	0.00%	819,182	-	0.00%
Sales Tax	18,860,400	13,216,181	70.07%	5,644,219	17,267,749	12,501,720	72.40%	4,766,029	714,461	5.71%
M&M Surtax	5,418,041	5,635,593	104.02%	(217,552)	5,409,315	3,636,708	67.23%	1,772,607	1,998,885	54.96%
Food Service	250,000	356,439	142.58%	(106,439)	211,426	195,125	92.29%	16,301	161,314	82.67%
Other Local	4,425,980	4,731,469	106.90%	(305,489)	1,041,248	2,532,136	243.18%	(1,490,888)	2,199,333	86.86%
VICC-VST Revenue	6,702,859	1,993,722	29.74%	4,709,137	7,187,345	2,179,418	30.32%	5,007,927	(185,696)	-8.52%
TOTAL LOCAL	221,345,608	212,803,038	96.14%	8,542,570	216,993,177	177,035,318	81.59%	39,957,859	35,767,720	20.20%
INTEREST	100,000	323,140	323.14%	(223,140)	342,657	266,232	77.70%	76,425	56,908	16.61%
COUNTY	3,635,827	3,593,926	98.85%	41,901	3,762,365	3,724,165	98.98%	38,200	(130,239)	-3.46%
STATE										
Basic Formula	2,507,206	2,425,743	96.75%	81,463	2,327,096	2,244,423	96.45%	82,673	181,320	7.79%
Classroom Trust	6,203,112	6,115,887	98.59%	87,225	6,429,322	5,778,552	89.88%	650,770	337,335	5.25%
Transportation	1,409,100	1,430,193	101.50%	(21,093)	1,402,473	1,285,047	91.63%	117,426	145,146	10.35%
Other State	1,309,618	1,052,506	80.37%	257,112	1,380,060	904,616	65.55%	475,444	147,890	10.72%
TOTAL STATE	11,429,036	11,024,329	96.46%	404,707	11,538,951	10,212,638	88.51%	1,326,313	811,691	7.03%
FEDERAL										
Federal Food Service	7,433,411	6,014,741	80.91%	1,418,670	2,432,108	1,963,076	80.72%	469,032	4,051,665	166.59%
Other Federal Entitlements	10,466,481	6,250,386	59.72%	4,216,095	4,505,589	3,734,528	82.89%	771,061	2,515,858	55.84%
TOTAL FEDERAL	17,899,892	12,265,127	68.52%	5,634,765	6,937,697	5,697,604	82.13%	1,240,093	6,567,523	94.66%
OTHER FINANCING SOURCES										
Transportation Reimbursement	3,032,845	1,594,200	52.56%	1,438,645	1,020,968	546,293	53.51%	474,675	1,047,907	102.64%
Tuition From Other Districts	28,930	4,420	15.28%	24,510	28,930	27,852	96.27%	1,078	(23,432)	-81.00%
Sale Of Property	5,359	37,858	706.44%	(32,499)	14,854	14,008	94.30%	846	23,850	160.56%
TOTAL OTHER FINANCING SOURCES	3,067,134	1,636,478	53.36%	1,430,656	1,064,752	588,153	55.24%	476,599	1,048,325	98.46%
SUB-TOTAL OPERATING REVENUE	257,477,497	241,646,038	93.85%	15,831,459	240,639,599	197,524,110	82.08%	43,115,489	44,121,928	18.34%
STUDENT ACTIVITIES	3,500,000	2,749,047	78.54%	750,953	1,286,383	1,116,883	86.82%	169,500	1,632,164	126.88%
TOTAL OPERATING REVENUE	260,977,497	244,395,085	93.65%	16,582,412	241,925,982	198,640,993	82.11%	43,284,989	45,754,092	18.91%
NON-OPERATING REVENUES										
2019 Bond Issue	-	-	100.00%	-	55,000,000	55,000,000	0.00%	-	(55,000,000)	100.00%
2019 Bond Issue Interest/Premium	100,000	111,692	111.69%	(11,692)	5,668,922	5,632,013	99.35%	36,909	(5,520,321)	-97.38%
2014 Bond Issue Interest/Premium	-	-	100.00%	-	564	1,006	178.37%	(442)	(1,006)	-178.37%
Debt Service Property Taxes	26,335,720	26,408,263	100.28%	(72,543)	24,827,748	20,928,207	84.29%	3,899,541	5,480,056	22.07%
Debt Service Delinquent Prop. Taxes	-	-	0.00%	-	(109,900)	-	0.00%	(109,900)	-	0.00%
Debt Service Interest/Premium	45,000	31,675	70.39%	13,325	48,936	41,183	84.16%	7,753	(9,508)	-19.43%
Debt Service County Revenue	724,153	733,594	101.30%	(9,441)	729,625	729,625	100.00%	-	3,969	0.54%
Cap. Projects Property Taxes	3,133,413	2,944,319	0.00%	189,094	-	-	0.00%	-	2,944,319	0.00%
Capital Projects Other	1,066,807	467,782	43.85%	599,025	370,063	408,607	110.42%	(38,544)	59,175	15.99%
Capital Interest/Premium	400	100	25.00%	300	442	-	0.00%	442	100	22.62%
TOTAL ALL REVENUE SOURCES	292,382,990	275,092,510	94.09%	17,290,480	328,462,382	281,381,634	85.67%	47,080,748	(6,289,124)	-1.91%

EXPENDITURE SUMMARY BY OBJECT
TOTAL ALL FUNDS
MAY 31, 2022

	BUDGET 2021-2022	ACTUAL EXPENDITURES YTD 5/31/2022	% EXPENDED 2021-2022	ACTUAL** EXPENDITURES 06/30/2021	ACTUAL EXPENDITURES YTD 5/31/2021	% EXPENDED 2020-2021	CHANGE FROM PRIOR YEAR	
							\$	%
SALARIES								
Certificated	109,066,529	86,609,206	79.41%	102,213,460	82,471,741	80.69%	4,137,465	5.02%
Classified	37,380,954	31,789,248	85.04%	33,875,464	29,472,906	87.00%	2,316,342	7.86%
Administrative	13,354,583	12,061,393	90.32%	12,653,477	11,632,413	91.93%	428,980	3.69%
TOTAL SALARIES	159,802,066	130,459,847	81.64%	148,742,401	123,577,060	83.08%	6,882,787	5.57%
BENEFITS								
Retirement, Social Security and Medicare	27,396,014	22,072,802	80.57%	25,462,022	21,023,292	82.57%	1,049,510	4.99%
Medical, Dental and Life Insurance	27,836,473	22,588,225	81.15%	26,508,994	22,734,085	85.76%	(145,860)	-0.64%
TOTAL BENEFITS	55,232,487	44,661,027	80.86%	51,971,016	43,757,377	84.20%	903,650	2.07%
PURCHASED SERVICES								
Substitute Services	2,667,076	2,958,473	110.93%	1,737,896	1,665,651	95.84%	1,292,822	77.62%
Tuition	439,850	213,642	48.57%	296,560	244,182	82.34%	(30,540)	-12.51%
Professional Services	3,309,925	2,050,316	61.94%	1,697,212	1,331,307	78.44%	719,009	54.01%
Audit	36,000	35,800	99.44%	33,500	33,500	100.00%	2,300	6.87%
Technical Services	153,251	128,388	83.78%	75,923	75,660	99.65%	52,728	69.69%
Legal Services	200,000	129,563	64.78%	158,151	144,937	91.64%	(15,374)	-10.61%
Property Services	2,859,062	2,370,180	82.90%	2,364,552	1,906,227	80.62%	463,953	24.34%
Travel & Contracted Trans.	2,045,330	1,569,126	76.72%	706,656	417,473	59.08%	1,151,653	275.86%
Property Insurance	919,512	607,949	66.12%	889,701	889,066	99.93%	(281,117)	-31.62%
Liability Insurance	956,219	674,751	70.56%	926,668	927,303	100.07%	(252,552)	100.00%
Other Purchased Services	3,322,541	2,637,634	79.39%	3,582,496	1,439,372	40.18%	1,198,262	83.25%
TOTAL PURCHASED SERVICES	16,908,766	13,375,822	79.11%	12,469,315	9,074,678	72.78%	4,301,144	47.40%
CONSUMABLES								
General Supplies	6,019,663	4,555,156	75.67%	6,219,249	3,651,617	58.71%	903,539	24.74%
Instructional Supplies	7,407,158	3,213,734	43.39%	4,564,275	3,734,137	81.81%	(520,403)	-13.94%
Textbooks and Library Books	1,663,560	539,286	32.42%	1,098,871	936,499	85.22%	(397,213)	-42.41%
Gasoline/Diesel	779,500	694,021	89.03%	310,281	214,441	69.11%	479,580	223.64%
Energy Services	3,540,000	3,032,121	85.65%	3,046,293	2,047,725	67.22%	984,396	48.07%
Food Service Supplies	2,738,711	2,242,611	81.89%	941,738	767,115	81.46%	1,475,496	192.34%
TOTAL CONSUMABLES	22,148,592	14,276,929	64.46%	16,180,707	11,351,534	70.15%	2,925,395	25.77%
SUBTOTAL OPERATING EXPENSES	254,091,911	202,773,625	79.80%	229,363,438	187,760,649	81.86%	15,012,976	8.00%
STUDENT ACTIVITIES	3,500,000	1,986,003	56.74%	1,135,640	699,359	61.58%	1,286,644	-4.84%
ANTICIPATED EXPENDITURE SAVINGS	(6,000,000)	-	0.00%	-	-	0.00%	-	0.00%
TOTAL OPERATING EXPENSES	251,591,911	204,759,628	81.39%	230,499,078	188,460,008	81.76%	16,299,620	8.65%
CAPITAL OUTLAY - NON BOND EXPENSES								
Land Improvement	500,000	515,669	103.13%	33,447	15,816	47.29%	499,853	100.00%
Building Alterations	1,092,255	407,298	37.29%	796,727	693,445	87.04%	(286,147)	-41.26%
General Equipment	1,399,810	474,649	33.91%	738,643	600,111	81.25%	(125,462)	-20.91%
Instructional Equipment	194,014	80,631	41.56%	78,557	66,661	84.86%	13,970	20.96%
Technology Equipment	126,766	195,362	154.11%	70,755	68,829	97.28%	126,533	183.84%
Student Activity	60,000	173,711	289.52%	59,549	34,259	57.53%	0.00%	0.00%
Vehicles	310,298	203,510	65.59%	379,464	338,428	89.19%	(134,918)	-39.87%
School Buses	955,010	305,033	31.94%	1,407,301	1,407,301	100.00%	(1,102,268)	-78.32%
TOTAL CAPITAL OUTLAY	4,638,153	2,355,863	50.79%	3,564,443	3,224,850	90.47%	(868,987)	-26.95%
2014 BOND ISSUE EXPENDITURES	-	-	0.00%	342,136	338,831	99.03%	(338,831)	-100.00%
2018 BOND ISSUE EXPENDITURES	35,000,000	13,300,672	38.00%	24,425,719	20,610,295	84.38%	(7,309,623)	-35.47%
CAPITAL FUND - BUS LEASES	328,981	979,640	297.78%	334,977	334,977	100.00%	644,663	192.45%
DEBT SERVICE - GO BONDS	24,362,056	24,347,903	99.94%	22,776,299	22,776,299	100.00%	1,571,604	6.90%
GRAND TOTAL EXPENSES	315,921,101	245,743,706	77.79%	281,942,652	235,745,260	83.61%	9,998,446	4.24%

**FOOD SERVICE
STATEMENT OF INCOME AND EXPENSE
MAY 31, 2022**

	BUDGET FY22	CURRENT MONTH	ACTUAL EXPENDITURES YTD 5/31/2022	% EXPENDED	PRIOR YEAR ACTUAL FY21	PRIOR YEAR TO DATE 5/31/2021	PRIOR YEAR % EXPENDED
RESERVE FOOD SERVICE SURPLUS		(\$852,981)	(\$2,384,393)		(\$804,185)	(\$804,186)	
INCOME							
LOCAL	250,000	30,400	356,439	142.58%	211,425	195,125	92.29%
STATE	42,138	3,737	30,278	71.86%	39,261	11,780	30.00%
FEDERAL	5,933,411	1,012,902	8,068,751	135.99%	2,522,300	2,432,109	96.42%
TOTAL INCOME	6,225,549	1,047,039	8,455,468	135.82%	2,772,986	2,639,014	95.17%
COST OF GOODS SOLD:							
Beginning Inventory		174,392	277,629		281,567	281,567	100.00%
Add: Purchases-Food	2,738,711	295,159	2,242,611	81.89%	941,738	767,115	81.46%
Purchases-Other	283,900	3,002	39,115	13.78%	116,073	114,674	98.79%
Goods Available		472,552	2,559,355		1,339,378	1,163,356	86.86%
Less: Ending Inventory		138,152	138,152		277,629	207,222	74.64%
TOTAL COST OF GOODS	3,022,611	334,400	2,421,203	80.10%	1,061,749	956,134	90.05%
GROSS MARGIN	\$3,202,938	712,639	6,034,265	188.40%	1,711,237	1,682,881	98.34%
OPERATION COSTS:							
Salaries	2,431,692	169,329	1,898,450	78.07%	2,002,895	1,782,581	89.00%
Fringe Benefits	1,244,973	95,395	942,244	75.68%	1,095,848	967,695	88.31%
Purchased Services	209,920	201,160	1,301,050	619.78%	73,763	68,593	92.99%
Operating Supplies	31,000	602	55,062	177.62%	47,391	46,788	98.73%
Credit for Services	(50,000)	(11,158)	(42,252)	84.50%	(47,114)	(37,583)	79.77%
Total Operating Costs	3,867,585	455,328	4,154,555	107.42%	3,172,783	2,828,074	89.14%
INCOME (LOSS) FROM OPERATIONS	(664,647)	257,311	1,879,710		(1,461,546)	(1,145,194)	78.35%
EQUIPMENT	200,000	-	90,987	45.49%	118,662	118,662	100.00%
RESERVE FOOD SERVICE SURPLUS		(\$595,669)	(\$595,669)		(\$2,384,393)	(\$2,068,041)	86.73%

**Parkway School District
Building Location Recap Report**

Fiscal Year 2022 Through Period 11 Run Date: 06-14-2022 @ 15:05:12

	Budget	Expended	Encumbrances	Unexpended
FERN RIDGE HIGH	23,780.00	7,094.25	482.35	16,203.40
CENTRAL HIGH	331,911.00	197,671.12	58,646.52	75,593.36
NORTH HIGH	320,152.00	207,351.69	37,819.02	74,981.29
WEST HIGH	419,967.00	226,310.09	48,019.84	145,637.07
SOUTH HIGH	487,282.00	289,879.17	59,960.10	137,442.73
SOUTHWEST MIDDLE	117,842.00	65,494.08	32,060.92	20,287.00
CENTRAL MIDDLE	173,276.00	98,027.17	24,288.16	50,960.67
NORTHEAST MIDDLE	179,575.00	112,872.34	58,321.05	8,381.61
SOUTH MIDDLE	104,997.00	74,787.62	4,193.38	26,016.00
WEST MIDDLE	234,186.00	89,197.60	96,675.18	48,313.22
MCKELVEY PRIMARY	40,320.00	41,558.89	934.13	-2,173.02
BARRETS ELEM.	73,222.98	45,955.00	19,763.05	7,504.93
BELLERIVE ELEM.	75,577.80	35,253.21	5,296.77	35,027.82
CARMAN TRAILS ELEM.	81,898.96	29,932.01	1,265.18	50,701.77
CLAYMONT ELEM.	100,778.00	47,770.33	393.33	52,614.34
CRAIG ELEM.	52,350.67	32,817.72	8,880.34	10,652.61
GREEN TRAILS ELEM.	82,213.17	53,511.17	6,189.70	22,512.30
HANNA WOODS ELEM.	110,836.02	60,943.74	26,202.98	23,689.30
HENRY ELEM.	116,563.98	59,850.94	49,965.59	6,747.45
HIGHCROFT ELEM.	52,984.72	26,379.78	1,500.00	25,104.94
MASON RIDGE ELEM.	94,841.47	37,745.15	431.65	56,664.67
MCKELVEY INTERMEDIATE	101,200.00	87,585.21	1,932.85	11,681.94
OAK BROOK ELEM.	91,869.24	62,324.20	12,213.85	17,331.19
PIERREMONT ELEM.	94,931.38	39,240.08	1,030.45	54,660.85
RIVER BEND ELEM.	85,087.32	39,434.82	4,307.71	41,344.79
ROSS ELEM.	76,299.91	27,265.41	18,300.85	30,733.65
SORRENTO SPRINGS ELEM.	72,459.00	18,647.91	543.78	53,267.31
SHENANDOAH VALLEY ELEM.	91,592.24	54,316.85	10,049.44	27,225.95
WREN HOLLOW ELEM.	82,471.00	68,845.82	5,776.65	7,848.53
 Grand Total for Funds 10-12	 3,767,361.86	 1,948,982.36	 432,169.23	 1,386,210.27
Grand Total for Fund 20	0.00	23,607.91	0.00	-23,607.91
Grand Total for Fund 30	0.00	0.00	0.00	0.00
Grand Total for Funds 40-41	203,104.00	265,473.10	163,275.59	-225,644.69
Grand Total All	3,970,465.86	2,238,063.37	595,444.82	1,136,957.67

**Parkway School District
Consolidated Budget - Programs Recap Report**

Fiscal Year 2022 Through Period 11 Run Date: 06-14-2022 @ 15:06:08

	Budget	Expended	Encumbrances	Unexpended
SPECIAL READING	17,254.00	9,405.95	453.38	7,394.67
COMM ARTS	176,958.00	74,015.24	7,116.73	95,826.03
MATHEMATICS	66,795.00	53,026.77	527.46	13,240.77
FINE ARTS	120,651.00	88,969.88	6,267.90	25,413.22
PHYSICAL EDUCATION	56,014.00	41,430.54	2,718.30	11,865.16
SCIENCE	96,578.00	57,215.00	5,896.77	33,466.23
SOCIAL STUDIES	82,850.51	44,740.42	3,422.37	34,687.72
INSTRUCTIONAL TECHNOLOGY	98,460.00	48,035.35	3,301.75	47,122.90
GUIDANCE	30,196.00	12,980.09	1,945.00	15,270.91
ART	130,525.00	98,125.04	9,726.70	22,673.26
BLDG ADMIN SERVICES	2,517,265.35	1,381,236.31	490,559.79	645,469.25
AUDIO VISUAL SERVICES	2,175.00	897.96	0.00	1,277.04
BUSINESS EDUCATION	36,043.00	16,027.88	519.87	19,495.25
MODERN CLASSICAL LANG	41,287.00	21,627.74	1,734.05	17,925.21
FAMILY AND CONSUMER SC	81,846.00	44,802.27	379.24	36,664.49
INDUSTRIAL ARTS	42,315.00	29,876.51	7,103.20	5,335.29
STUDENT BODY ACT	244,452.00	149,162.83	42,271.16	53,018.01
COOP VOC ED	2,469.00	1,973.71	2,500.00	-2,004.71
UNIFIED STUDIES	2,322.00	3,628.41	232.30	-1,538.71
SPEECH	21,995.00	12,849.79	0.00	9,145.21
LIBRARY SVCS	78,945.00	74,929.85	8,719.78	-4,704.63
HEALTH ED	7,690.00	2,576.39	0.00	5,113.61
EEE CAMP	1,725.00	498.38	0.00	1,226.62
ESOL	983.00	785.76	0.00	197.24
GIFTED EDUCATION	12,372.00	5,774.79	49.07	6,548.14
SPECIAL SERVICES	300.00	0.00	0.00	300.00
ADC	0.00	387.00	0.00	-387.00
INSTRUCTIONAL STAFFING	136,599,908.00	113,348,297.75	0.00	23,251,610.25
BLDG LEVEL STAFFING	16,889,185.00	15,178,130.38	0.00	1,711,054.62
ATHLETICS	6,480,903.00	1,502,087.73	207,555.11	4,771,260.16
ADULT BASIC EDUCATION	1,739,135.00	1,177,184.49	11,967.51	549,983.00
SWIM CLUB	800,883.00	540,701.81	11,988.00	248,193.19
EARLY CHILDHOOD	1,662,130.00	1,595,462.95	6,152.69	60,514.36
PRESCHOOLS	2,236,262.00	2,023,045.22	76,325.63	136,891.15
PARK ROCK COMM ED	19,400.00	21,766.18	0.00	-2,366.18
STUDENT SERVICES	1,448,878.00	1,359,520.87	93,129.99	-3,772.86
PUPIL PERSONNEL	2,105,257.00	1,771,492.63	0.00	333,764.37
HEALTH SERVICES	3,035,024.00	2,447,050.04	35,960.33	552,013.63

**Parkway School District
Consolidated Budget - Programs Recap Report**

Fiscal Year 2022 Through Period 11 Run Date: 06-14-2022 @ 15:06:09

	Budget	Expended	Encumbrances	Unexpended
GUIDANCE AND COUNSELING	245,842.00	276,072.97	36,417.02	-66,647.99
SEB SUPPORT	96,236.00	53,765.27	13,082.47	29,388.26
DATA MGMT/RESEARCH	308,864.00	239,055.29	5,867.71	63,941.00
STUDENT DISC & ALT STUDIES	818,529.00	621,620.87	220.03	196,688.10
SPECIAL SERVICES	352,564.00	310,646.57	0.00	41,917.43
ASST SUPER OF STUDENT SERV	368,797.00	221,525.92	6,788.49	140,482.59
TEACH LEARN ACCOUNTABILITY	5,519,330.14	3,268,388.52	435,986.98	1,814,954.64
PROFESSIONAL LEARNING	1,269,168.00	556,345.63	23,428.59	689,393.78
READING DIAGNOSTICS	120,727.00	94,269.49	0.00	26,457.51
INSTRUC TECH LIBRARY MEDIA	1,152,214.00	990,241.77	64,852.24	97,119.99
STUDENT ASSESSMENT	289,729.00	229,284.57	36,970.40	23,474.03
PROGRESS MONITORING	306,498.00	171,733.91	0.00	134,764.09
ELEM COMM ARTS	5,800.00	9,372.25	0.00	-3,572.25
ELEM SOC STUDIES	24,750.00	17,327.26	0.00	7,422.74
ELEM MATH	2,000.00	1,946.53	0.00	53.47
ELEM SCIENCE	13,587.00	8,823.76	0.00	4,763.24
MIDD ELA	4,075.00	876.13	0.00	3,198.87
MIDD SOC STUDIES	600.00	159.71	0.00	440.29
MIDD MATH	7,500.00	2,517.06	0.00	4,982.94
MIDD SCIENCE	13,125.00	970.49	0.00	12,154.51
HIGH ELA	40,755.00	729.73	2,175.39	37,849.88
HIGH SOC STUDIES	2,720.00	356.99	0.00	2,363.01
HIGH MATH	1,650.00	139.99	0.00	1,510.01
HIGH SCIENCE	2,380.00	120.00	0.00	2,260.00
FINE ARTS	195,369.00	126,992.59	28,790.90	39,585.51
PHYSICAL EDUC	2,000.00	99.00	0.00	1,901.00
GIFTED	27,700.00	2,399.06	10,250.00	15,050.94
ESOL	47,900.00	15,321.91	4,000.61	28,577.48
WORLD LANGUAGE	12,750.00	12,491.83	0.00	258.17
CAREER & TECH ED	7,550.00	2,366.80	0.00	5,183.20
CHOICE	447,750.00	353,877.09	155,971.10	-62,098.19
INSTRUCTIONAL TECHNOLOGY	10,050.00	9,538.85	47.65	463.50
PATH	151,366.00	105,981.08	180.80	45,204.12
OUTDOOR SCHOOL	48,150.00	3,165.60	0.00	44,984.40
SUMMER SCHOOL	1,513,615.00	295,256.98	21,500.00	1,196,858.02
VIRTUAL CAMPUS	106,538.00	3,481,398.56	10,770.00	-3,385,630.56
ST. LOUIS VIRTUAL ACADEMY	0.00	550.00	0.00	-550.00
BOARD OF EDUCATION	194,900.00	85,209.48	1,131.84	108,558.68

**Parkway School District
Consolidated Budget - Programs Recap Report**

Fiscal Year 2022 Through Period 11 Run Date: 06-14-2022 @ 15:06:09

	Budget	Expended	Encumbrances	Unexpended
SUPERINTENDENT	903,234.00	450,579.44	0.00	452,654.56
DISTRICT DUES	157,131.00	156,278.04	0.00	852.96
LEGAL SERVICES	200,000.00	127,252.61	27,008.75	45,738.64
DEPUTY SUPERINTENDENT	465,620.00	294,273.10	69,922.00	101,424.90
CHIEF FINANCIAL OFFICER	365,020.00	316,282.94	1,590.51	47,146.55
COMMUNICATIONS	1,104,231.00	951,150.90	21,045.79	132,034.31
SAFETY SECURITY	1,296,850.00	1,068,571.31	117,412.47	110,866.22
SPECIAL PROJECTS	902,163.00	112,928.81	1,914.10	787,320.09
FINANCE	1,120,705.00	1,051,584.97	4,995.32	64,124.71
INTERNAL EQUIP FIN	483,879.00	475,899.61	15,805.12	-7,825.73
RISK MGMT	2,688,487.00	1,777,573.22	106,689.92	804,223.86
FOOD SERVICES	8,293,326.00	6,527,267.55	309,270.01	1,456,788.44
PURCHASING	480,917.00	298,220.06	26,503.86	156,193.08
PRINT SHOP	34,899.00	54,078.13	5,912.16	-25,091.29
SCHOOL STORES	207,969.00	164,627.10	19,055.47	24,286.43
WAREHOUSE	794,995.00	566,497.86	6,169.11	222,328.03
MAILROOM	83,637.00	75,486.87	609.81	7,540.32
TECHNOLOGY	8,392,145.00	6,067,243.12	1,504,823.68	820,078.20
HUMAN RESOURCES	1,213,103.00	1,020,228.79	3,968.97	188,905.24
TRANSPORTATION	7,410,134.00	6,239,600.39	176,949.57	993,584.04
SSD TRANSPORTATION	2,381,422.00	1,762,162.51	0.00	619,259.49
STUDENTS IN TRANSITION	25,000.00	-1,579.20	965.07	25,614.13
FACILITY OPERATIONS	10,340,477.00	6,863,590.12	829,345.76	2,647,541.12
FACILITY MAINTENANCE	4,727,849.00	4,157,878.42	234,079.21	335,891.37
GROUND MAINTENANCE	2,268,211.00	1,529,139.07	161,363.87	577,708.06
PLANNING	2,045,746.00	1,706,588.37	212,232.73	126,924.90
ENVIRONMENTAL SVCS	615,616.00	458,648.61	50,997.33	105,970.06
FACILITY MANAGEMENT	942,396.00	752,673.14	-40,490.55	230,213.41
REBATE PROJECTS	1,039,221.00	298,195.97	29,762.60	711,262.43
ENERGY SERVICES	4,066,000.00	3,486,709.20	838,218.85	-258,928.05
SUSTAINABILITY	1,052,346.00	623,344.49	153,005.72	275,995.79
2018 BOND	35,000,000.00	13,300,671.67	20,431,649.45	1,267,678.88
DEBT SERVICE	24,362,056.00	24,347,903.16	4,303.08	9,849.76
STATE GRANTS	307,749.00	275,025.51	0.00	32,723.49
FEDERAL GRANTS	1,817,439.00	1,363,358.84	118,624.03	335,456.13
LOCAL GRANTS	110,619.00	53,397.72	0.00	57,221.28

**Parkway School District
Consolidated Budget - Programs Recap Report**

Fiscal Year 2022 Through Period 11 Run Date: 06-14-2022 @ 15:06:09

	Budget	Expended	Encumbrances	Unexpended
Grand Total for Funds 10-12	91,673,215.00	69,303,503.07	5,522,689.95	16,847,021.98
Grand Total for Fund 20	162,418,696.00	133,470,121.35	0.00	28,948,574.65
Grand Total for Fund 30	24,362,056.00	24,347,903.16	4,303.08	9,849.76
Grand Total for Funds 40-41	4,967,134.00	3,161,792.59	1,382,017.59	1,691,002.70
 Grand Total All	 318,421,101.00	 243,583,991.84	 27,340,660.07	 47,496,449.09

**Parkway School District
Program Budget - Programs Recap Report**

Fiscal Year 2022 Through Period 11 Run Date: 06-14-2022 @ 15:07:24

	Budget	Expended	Encumbrances	NKNOWN	Unexpended
SPECIAL READING	17,254.00	9,405.95	453.38	0.00	7,394.67
COMM ARTS	176,958.00	74,015.24	7,116.73	0.00	95,826.03
MATHEMATICS	66,795.00	53,026.77	527.46	0.00	13,240.77
FINE ARTS	120,651.00	88,969.88	6,267.90	0.00	25,413.22
PHYSICAL EDUCATION	56,014.00	41,430.54	2,718.30	0.00	11,865.16
SCIENCE	96,578.00	57,215.00	5,896.77	0.00	33,466.23
SOCIAL STUDIES	82,850.51	44,740.42	3,422.37	0.00	34,687.72
INSTRUCTIONAL TECHNOLOGY	98,460.00	48,035.35	3,301.75	0.00	47,122.90
GUIDANCE	30,196.00	12,980.09	1,945.00	0.00	15,270.91
ART	130,525.00	98,125.04	9,726.70	0.00	22,673.26
BLDG ADMIN SERVICES	2,485,265.35	1,306,404.45	490,559.79	0.00	688,301.11
AUDIO VISUAL SERVICES	2,175.00	897.96	0.00	0.00	1,277.04
BUSINESS EDUCATION	36,043.00	16,027.88	519.87	0.00	19,495.25
MODERN CLASSICAL LANG	41,287.00	21,627.74	1,734.05	0.00	17,925.21
FAMILY AND CONSUMER SC	81,846.00	44,802.27	379.24	0.00	36,664.49
INDUSTRIAL ARTS	42,315.00	29,876.51	7,103.20	0.00	5,335.29
STUDENT BODY ACT	244,452.00	149,162.83	42,271.16	0.00	53,018.01
COOP VOC ED	2,469.00	1,973.71	2,500.00	0.00	-2,004.71
UNIFIED STUDIES	2,322.00	3,628.41	232.30	0.00	-1,538.71
SPEECH	21,995.00	12,849.79	0.00	0.00	9,145.21
LIBRARY SVCS	78,945.00	74,929.85	8,719.78	0.00	-4,704.63
HEALTH ED	7,690.00	2,576.39	0.00	0.00	5,113.61
EEE CAMP	1,725.00	498.38	0.00	0.00	1,226.62
ESOL	983.00	785.76	0.00	0.00	197.24
GIFTED EDUCATION	12,372.00	5,774.79	49.07	0.00	6,548.14
SPECIAL SERVICES	300.00	0.00	0.00	0.00	300.00
ADC	0.00	387.00	0.00	0.00	-387.00
INSTRUCTIONAL STAFFING	2,400,000.00	2,845,685.24	0.00	0.00	-445,685.24
ATHLETICS	1,005,124.00	594,178.70	207,555.11	0.00	203,390.19
ADULT BASIC EDUCATION	176,750.00	123,682.08	11,967.51	0.00	41,100.41
SWIM CLUB	138,200.00	112,484.63	11,988.00	0.00	13,727.37
EARLY CHILDHOOD	96,900.00	49,601.23	6,152.69	0.00	41,146.08
PRESCHOOLS	274,000.00	173,149.43	76,325.63	0.00	24,524.94
PARK ROCK COMM ED	19,400.00	17,138.98	0.00	0.00	2,261.02
STUDENT SERVICES	1,377,227.00	1,315,565.61	93,129.99	0.00	-31,468.60
PUPIL PERSONNEL	318,770.00	112,856.89	0.00	0.00	205,913.11

**Parkway School District
Program Budget - Programs Recap Report**

Fiscal Year 2022 Through Period 11 Run Date: 06-14-2022 @ 15:07:24

	Budget	Expended	Encumbrances	NKNOWN	Unexpended
HEALTH SERVICES	238,695.00	111,513.88	35,960.33	0.00	91,220.79
GUIDANCE AND COUNSELING	104,628.00	143,744.16	36,417.02	0.00	-75,533.18
SEB SUPPORT	96,236.00	52,729.82	13,082.47	0.00	30,423.71
DATA MGMT/RESEARCH	58,937.00	12,020.19	5,867.71	0.00	41,049.10
STUDENT DISC & ALT STUDIES	13,200.00	10,367.98	220.03	0.00	2,611.99
SPECIAL SERVICES	41,910.00	19,396.29	0.00	-157.50	22,513.71
ASST SUPER OF STUDENT SERV	164,534.00	31,591.13	6,788.49	0.00	126,154.38
TEACH LEARN ACCOUNTABILITY	2,828,273.14	1,279,736.33	435,986.98	0.00	1,112,549.83
PROFESSIONAL LEARNING	408,476.00	88,448.97	23,428.59	0.00	296,598.44
READING DIAGNOSTICS	22,204.00	11,632.19	0.00	0.00	10,571.81
INSTRUC TECH LIBRARY MEDIA	412,050.00	336,143.05	64,852.24	0.00	11,054.71
STUDENT ASSESSMENT	125,323.00	105,659.47	36,970.40	0.00	-17,306.87
ELEM COMM ARTS	5,800.00	9,372.25	0.00	0.00	-3,572.25
ELEM SOC STUDIES	24,750.00	17,327.26	0.00	0.00	7,422.74
ELEM MATH	2,000.00	1,946.53	0.00	0.00	53.47
ELEM SCIENCE	13,587.00	8,823.76	0.00	0.00	4,763.24
MIDD ELA	4,075.00	876.13	0.00	0.00	3,198.87
MIDD SOC STUDIES	600.00	159.71	0.00	0.00	440.29
MIDD MATH	7,500.00	2,517.06	0.00	0.00	4,982.94
MIDD SCIENCE	13,125.00	970.49	0.00	0.00	12,154.51
HIGH ELA	40,755.00	729.73	2,175.39	0.00	37,849.88
HIGH SOC STUDIES	2,720.00	356.99	0.00	0.00	2,363.01
HIGH MATH	1,650.00	139.99	0.00	0.00	1,510.01
HIGH SCIENCE	2,380.00	120.00	0.00	0.00	2,260.00
FINE ARTS	195,369.00	114,930.03	28,790.90	0.00	51,648.07
PHYSICAL EDUC	2,000.00	99.00	0.00	0.00	1,901.00
GIFTED	27,700.00	2,399.06	10,250.00	0.00	15,050.94
ESOL	32,400.00	9,716.45	4,000.61	0.00	18,682.94
WORLD LANGUAGE	12,750.00	12,491.83	0.00	0.00	258.17
CAREER & TECH ED	7,550.00	2,366.80	0.00	0.00	5,183.20
CHOICE	447,750.00	282,066.41	155,971.10	0.00	9,712.49
INSTRUCTIONAL TECHNOLOGY	10,050.00	9,538.85	47.65	0.00	463.50
PATH	12,400.00	1,033.25	180.80	0.00	11,185.95
OUTDOOR SCHOOL	48,150.00	-8,014.54	0.00	0.00	56,164.54
SUMMER SCHOOL	70,000.00	12,614.12	21,500.00	0.00	35,885.88
VIRTUAL CAMPUS	106,538.00	99,480.27	10,770.00	-700.00	-3,712.27

**Parkway School District
Program Budget - Programs Recap Report**

Fiscal Year 2022 Through Period 11 Run Date: 06-14-2022 @ 15:07:24

	Budget	Expended	Encumbrances	NKNOWN	Unexpended
ST. LOUIS VIRTUAL ACADEMY	0.00	550.00	0.00	0.00	-550.00
BOARD OF EDUCATION	194,900.00	85,209.48	1,131.84	0.00	108,558.68
SUPERINTENDENT	452,000.00	23,804.56	0.00	0.00	428,195.44
DISTRICT DUES	157,131.00	156,278.04	0.00	0.00	852.96
LEGAL SERVICES	200,000.00	127,252.61	27,008.75	0.00	45,738.64
DEPUTY SUPERINTENDENT	146,401.00	10,686.66	69,922.00	0.00	65,792.34
CHIEF FINANCIAL OFFICER	10,775.00	5,601.22	1,590.51	0.00	3,583.27
COMMUNICATIONS	169,220.00	165,498.17	21,045.79	0.00	-17,323.96
SAFETY SECURITY	823,807.00	590,157.21	117,412.47	0.00	116,237.32
SPECIAL PROJECTS	812,207.00	575.00	1,914.10	0.00	809,717.90
FINANCE	101,520.00	57,486.54	4,995.32	0.00	39,038.14
INTERNAL EQUIP FIN	483,879.00	475,899.61	15,805.12	0.00	-7,825.73
RISK MGMT	1,844,903.00	1,224,175.45	0.00	0.00	620,727.55
FOOD SERVICES	4,813,531.00	3,686,573.39	309,270.01	0.00	817,687.60
PURCHASING	32,760.00	5,336.89	26,503.86	0.00	919.25
PRINT SHOP	-24,425.00	4,002.44	5,912.16	0.00	-34,339.60
SCHOOL STORES	15,500.00	14,266.83	19,055.47	0.00	-17,822.30
WAREHOUSE	42,340.00	45,485.69	6,169.11	0.00	-9,314.80
MAILROOM	19,500.00	21,460.11	609.81	0.00	-2,569.92
TECHNOLOGY	4,780,566.00	2,976,580.80	1,504,823.68	0.00	299,161.52
HUMAN RESOURCES	150,390.00	45,628.96	3,968.97	0.00	100,792.07
TRANSPORTATION	1,865,591.00	1,741,380.32	176,949.57	0.00	-52,738.89
SSD TRANSPORTATION	243,495.00	130,649.01	0.00	0.00	112,845.99
STUDENTS IN TRANSITION	25,000.00	-1,579.20	965.07	0.00	25,614.13
FACILITY OPERATIONS	2,106,205.00	298,123.15	829,345.76	0.00	978,736.09
FACILITY MAINTENANCE	1,083,260.00	1,355,447.03	234,079.21	0.00	-506,266.24
GROUNDS MAINTENANCE	960,314.00	550,067.85	161,363.87	0.00	248,882.28
PLANNING	1,209,115.00	1,026,962.31	212,232.73	0.00	-30,080.04
ENVIRONMENTAL SVCS	309,725.00	223,160.03	50,997.33	0.00	35,567.64
FACILITY MANAGEMENT	580,618.00	434,429.86	-40,490.55	0.00	186,678.69
REBATE PROJECTS	1,039,221.00	298,195.97	29,762.60	0.00	711,262.43
ENERGY SERVICES	4,066,000.00	3,486,709.20	838,218.85	0.00	-258,928.05
SUSTAINABILITY	980,147.00	565,828.22	153,005.72	0.00	261,313.06
2018 BOND	35,000,000.00	13,300,671.67	20,431,649.45	0.00	1,267,678.88
DEBT SERVICE	24,362,056.00	24,347,903.16	4,303.08	0.00	9,849.76
FEDERAL GRANTS	312,335.00	598,201.85	118,624.03	0.00	-404,490.88

**Parkway School District
Program Budget - Programs Recap Report**

Fiscal Year 2022 Through Period 11 Run Date: 06-14-2022 @ 15:07:24

	Budget	Expended	Encumbrances	NKNOWN	Unexpended
LOCAL GRANTS	0.00	18,329.50	0.00	0.00	-18,329.50
STUDENT ACTIVITIES	6,442,434.29	2,011,037.36	318,182.67	0.00	4,113,214.26
 Grand Total for Funds 10-12	44,167,057.29	26,527,182.90	5,708,251.82	-157.50	11,931,622.57
Grand Total for Fund 20	2,667,076.00	2,926,301.55	0.00	-700.00	-259,225.55
Grand Total for Fund 30	24,362,056.00	24,347,903.16	4,303.08	0.00	9,849.76
Grand Total for Funds 40-41	4,967,134.00	3,335,503.35	1,407,948.47	0.00	1,491,361.06
 Grand Total All	111,163,323.29	70,437,562.63	27,552,152.82	-857.50	13,173,607.84

- **GLOSSARY**

ACCOUNTS PAYABLE - Unpaid amounts currently owed to vendors for goods and services provided.

ACCOUNTS RECEIVABLE - Revenues earned but not yet received by the District.

AMOUNT PROVIDED FOR BOND PRINCIPAL - Amount available to meet current and future bond payments.

AMOUNT TO BE PROVIDED FOR PRINCIPAL AND INTEREST - The amount of funds needed to repay remaining bonded indebtedness. This is a “memo type” entry and does not represent an actual accumulation of cash.

BONDS AND INTEREST PAYABLE - CURRENT - Amount of bond principal and interest payable in future years.

CONSTRUCTION IN PROGRESS - Amounts expended to date on construction projects not completed. When completed, this account is reduced by the total cost of the completed projects.

ENCUMBRANCES - Obligations in the form of purchase orders, contracts, salary commitments, etc. for which a budgeted appropriation has been made.

EQUITY IN GENERAL FIXED ASSETS - Represents the appropriation of funds over a number of years to acquire land, buildings / improvements, and equipment. It is an offset to the respective asset accounts.

FUND BALANCE - The excess of assets over liabilities, which represent the “net worth” of a fund.

FUNDS - The four basic funds and their purposes are:

Capital Projects (Building) - Only capital equipment and building additions / alterations can be charged to this fund. Primary sources of revenue are property / delinquent taxes, building leases, investment income and sale of bonds.

Debt Service - Bond principal, interest and fees associated with the issue and redemption of bonds are the only expenses chargeable to this fund. Primary sources of revenue are property / delinquent taxes and investment income.

General (Incidental) - Expenses not specifically chargeable to other funds are charged to this fund. Primary sources of revenue are property / delinquent taxes, sales tax, investment income, minimum guarantee, VST, textbook, transportation and food service.

Special Revenue (Teachers) - Only salaries for certificated personnel and the cost medical / dental / vision / life insurance can be charged to this fund. Primary sources of revenue are property / delinquent taxes, investment income, state utility tax, minimum guarantee and VST.

INVENTORIES - Value of consumables purchased for future use.

PREPAID EXPENSES - Services paid for in advance of use (e.g. insurance).

RESERVE - Portion of the fund balance which is segregated for a future use and, therefore, not available for future appropriation.

RESERVE FOR BUDGETED ENCUMBRANCE - Funds budgeted and encumbered but not yet spent.

RESTRICTED RESERVE - Balances in the General Fund or Capital Projects Fund restricted as to the use (e.g. future medical / dental benefits) or unspent bond issue funds.

UNREALIZED REVENUES - Revenues budgeted but not yet realized.

UNSPENT BUDGETED FUNDS - Funds budgeted but not expended or encumbered.



FOR MONTH OF: MAY – FY22

Attached is a list (alphabetical by vendor) of purchase orders and order for payments \$500 to \$15,000 and \$15,000 + which the administration has approved in accordance with Policy #DJE BP

Reports per DIC.BP

c: Patty Bedborough, Brian Whittle

ORDER FOR PAYMENTS

\$500 - \$15,000

MAY FY22

VENDOR	VENDOR NAME	OBJECT	DOC. #	AMOUNT	WARRANT	CHECK #	INVOICE
999997	A.J. JULIANI	6319	478105	\$ 1,900.00		0	478105
625571	AARCH CASTER & EQUIP	6411	476828	\$ 872.00	052622	8037	70846
748084	AASPA-AMERICAN ASSOC	6319	479018	\$ 750.00		0	479018
700413	AC SYSTEMS, INC	6411	476318	\$ 501.00	REG	517429	73498
700413	AC SYSTEMS, INC	6411	477876	\$ 526.00	REG	517722	73663
701193	ADVANTAGE PROMOTIONA	6411	476063	\$ 587.83	REG	517431	50394
700592	AMAZON	6411	479085	\$ 512.25		0	479085
700592	AMAZON	6411	478088	\$ 796.95		0	478088
700592	AMAZON	6411	478084	\$ 1,755.90		0	478084
700592	AMAZON	6412	479453	\$ 699.00		0	479453
700592	AMAZON	6431	478073	\$ 826.94		0	478073
700592	AMAZON	6431	478074	\$ 1,463.22		0	478074
601876	AMPLIFIED IT, LLC	6412	476821	\$ 530.00	REG	517628	42061
601876	AMPLIFIED IT, LLC	6412	476241	\$ 900.00	REG	517434	41896
732602	ASBO-ASSOCIATION OF	6319	477139	\$ 1,600.00		0	477139
300092	AT&T MOBILITY	6361	479011	\$ 1,937.16		0	0826811811-032522
300092	AT&T MOBILITY	6361	479010	\$ 2,423.25		0	834829586X03202022
702584	B & H PHOTO & ELECTR	6411	479480	\$ 1,199.99		0	479480
702584	B & H PHOTO & ELECTR	6412	475303	\$ 619.00	REG	517171	201337553
702584	B & H PHOTO & ELECTR	6412	476847	\$ 619.00	REG	517629	201343790
702584	B & H PHOTO & ELECTR	6412	479044	\$ 619.00		0	479044
700086	BIO RAD LABORATORIES	6411	478128	\$ 569.70		0	905485254
999997	BSN SPORTS LLC	6411	477147	\$ 1,260.00		0	477147
923351	BSN SPORTS, LLC	6411	476684	\$ 641.25	REG	517439	916158413
648817	CASUAL TEES	6411	476760	\$ 796.25	052622	8044	62786
300225	CHARTER COMMUNICATIO	6361	479434	\$ 1,482.45		0	1.15052E+14
300225	CHARTER COMMUNICATIO	6361	479435	\$ 3,200.00		0	1.53689E+11
653061	CLEAN CARTON CO INC	6412	476113	\$ 999.00	REG	517443	1115437-01
653061	CLEAN CARTON CO INC	6521	477911	\$ 877.20	REG	517843	1115657-01
700066	COLLEGIATE AWARDS	6411	475829	\$ 815.60	REG	517204	22512
626852	CONCOURSE TEAM EXPRE	6411	476649	\$ 629.00	REG	517445	INV548290
623503	CSI/COMMERCIAL SERVI	6332	476287	\$ 866.82	REG	517448	263154
613816	DALE SIGN SERVICE IN	6411	475856	\$ 578.00	051222	7965	153283
999997	EB DEV UP 2022	6319	479043	\$ 600.00		0	479043
954332	EXPRESS PRESS	6411	475759	\$ 567.22	REG	517226	47456
954332	EXPRESS PRESS	6411	476779	\$ 630.05	REG	517452	46800
954332	EXPRESS PRESS	6411	475980	\$ 956.92	REG	517226	47385
600150	FORD HOTEL & SUPPLY	6411	476149	\$ 789.03	REG	517453	1376474
600150	FORD HOTEL & SUPPLY	6411	477500	\$ 949.60	REG	517748	1377047
623679	FOX C-6 SCHOOL DISTR	6341	477191	\$ 931.66	EARLY	517570	95
601693	FULL COMPASS	6411	475861	\$ 564.82	051222	7968	INC02147351
626051	GATEWAY SCREEN	6411	475852	\$ 792.00	REG	517234	1744
626051	GATEWAY SCREEN	6411	476683	\$ 792.00	REG	517455	1745
626051	GATEWAY SCREEN	6411	475855	\$ 816.00	REG	517234	1743
999996	GOLDFARB, HANNI	6319	476637	\$ 992.89	REG	517771	HG1
812014	HALO BRANDED SOL	6411	476860	\$ 577.52	REG	517652	2.022E+11
808090	HEINEMANN	6431	478066	\$ 1,848.00		0	7431988
999997	Hollyberry Catering	6411	477138	\$ 882.00		0	477138

VENDOR	VENDOR NAME	OBJECT	DOC. #	AMOUNT	WARRANT	CHECK #	INVOICE
801940	HUMANE SOCIETY OF MI	6411	478012	\$ 625.42	REG	517891	DONATION-MCKELVEY
802157	INTER-STATE STUDIO	6411	476259	\$ 580.00	REG	517464	45368
840698	ISTE	6319	479457	\$ 660.00		0	479457
840698	ISTE	6319	479458	\$ 660.00		0	479458
840698	ISTE	6319	479459	\$ 660.00		0	479459
840698	ISTE	6319	479460	\$ 660.00		0	479460
626893	JAAISE GRUBB	6411	476024	\$ 630.00	REG	517465	(CATERING) P413
810337	JOURNALISM EDUCATION	6398	476812	\$ 885.00	EARLY	517699	0084-0240
801304	KAEMMERLEN PARTS & S	6332	478142	\$ 546.25	060922	8111	W78532
626880	KARASE, LILY	6391	477563	\$ 900.00	REG	517895	KARASE4.29.22
810662	KIRKWOOD TRADING	6411	477873	\$ 545.40	REG	0	22-228
814991	LATHAN, ADRIENNE	6398	478157	\$ 550.83	REG	517904	REIMB SUBWAY 5-13-22
800278	MAESP	6371	476128	\$ 584.00	051922	8017	12956
999997	MERAMEC CAVERNS TICK	6398	477137	\$ 729.00		0	477137
302317	MISSOURI AMERICAN WA	6335	479536	\$ 665.14		0	479536
302317	MISSOURI AMERICAN WA	6335	479491	\$ 888.80		0	479491
302317	MISSOURI AMERICAN WA	6335	479482	\$ 1,000.00		0	479482
302317	MISSOURI AMERICAN WA	6335	479487	\$ 1,000.00		0	479487
302317	MISSOURI AMERICAN WA	6335	479488	\$ 1,000.00		0	479488
302317	MISSOURI AMERICAN WA	6335	479492	\$ 1,000.00		0	479492
302317	MISSOURI AMERICAN WA	6335	479496	\$ 1,000.00		0	479496
302317	MISSOURI AMERICAN WA	6335	479497	\$ 1,000.00		0	479497
302317	MISSOURI AMERICAN WA	6335	479508	\$ 1,000.00		0	479508
302317	MISSOURI AMERICAN WA	6335	479537	\$ 1,000.00		0	479537
812264	NORMAN LUMBER	6411	476685	\$ 812.46	REG	517481	2205-0025
800427	NORTHWEST R-1 SCHOOL	6391	476103	\$ 500.00	REG	517291	BTRACK040922-WEST
800427	NORTHWEST R-1 SCHOOL	6391	476157	\$ 500.00	REG	517482	BTRACK040922
809084	OFFICE ESSENTIALS IN	6411	474977	\$ 679.60	REG	517294	WO-112607-1
809084	OFFICE ESSENTIALS IN	6411	477364	\$ 716.31	REG	517672	WO-128964-1
914414	ORLANDO WORLD CENTER	6343	479022	\$ 1,157.88		0	479022
914414	ORLANDO WORLD CENTER	6343	479023	\$ 1,157.88		0	479023
915628	OVERDRIVE INC.	6412	479456	\$ 685.89		0	08633CO22109811
915628	OVERDRIVE INC.	6412	479463	\$ 924.15		0	08633CO22122717
918969	PAPPAS, CYNTHIA K.	6362	476655	\$ 540.00	REG	517485	MARCH 14,2022
918969	PAPPAS, CYNTHIA K.	6362	476654	\$ 840.00	REG	517485	APRIL 7,2022
999997	PEDANOW - EDUCA	6312	478988	\$ 1,014.05		0	478988
814349	PORTA PHONE	6411	477448	\$ 699.00	REG	517673	22PP1723
999997	PROJECT LEAD THE WAY	6319	478989	\$ 2,400.00		0	478989
999997	PROJECT LEAD THE WAY	6319	479032	\$ 2,400.00		0	479032
999997	QDOBA 2523 ONLINE	6411	479047	\$ 1,084.08		0	479047
915157	ROLLIE JOHNSON INC	6411	474953	\$ 553.92	050522	7950	9615
999997	SP NEW PERSPECTIVES	6411	479000	\$ 917.64		0	479000
901567	ST. LOUIS CNTY CAB C	6342	475477	\$ 592.60	051222	7990	5801-001
901567	ST. LOUIS CNTY CAB C	6342	475794	\$ 726.00	051222	7990	5287-014
918972	ST. LOUIS CRISIS NUR	6411	477167	\$ 996.00	REG	517790	DONATION-WREN
911209	STAPLES	6412	477894	\$ 525.17	REG	517953	MPB233
999997	SUMNER ONE INC	6411	478111	\$ 821.95		0	478111
912759	UNIV. OF MISSOUR	6319	477488	\$ 750.00	EARLY	517721	INV0453340
TOTAL:				\$ 87,807.89			

PURCHASE ORDERS

\$500 - \$15,000

MAY FY22

PO#	Vendor Name	PO Date	Order Amount	Balance	Status	1st GL Account
71220016	A GRAPHIC RESOURCE INCORPORATED	05/06/2022	\$ 7,693.26	\$ -	0 - Closed	10.2322.409.0070.636
85220347	ACCURATE ASPHALT PAVING CO.INC	05/23/2022	\$ 1,500.00	\$ -	0 - Closed	10.2542.554.0085.631
50220112	ADOLPH KIEFER & ASSOCIATES LLC	05/03/2022	\$ 977.00	\$ -	0 - Closed	10.1421.117.1050.641
85220351	ADVANCED ELEVATOR	05/27/2022	\$ 3,000.00	\$ 3,000.00	8 - Printed	10.2542.552.0085.633
58220180	ANDRE'S BANQUET FACILITIES	05/27/2022	\$ 755.55	\$ -	0 - Closed	11.1421.900.1090.641
58220165	ANDRE'S BANQUET FACILITIES	05/09/2022	\$ 1,259.25	\$ 1,259.25	8 - Printed	11.1411.900.1090.641
40220029	ARCH CITY SEWING MACHINE REPAIR, LL	05/09/2022	\$ 1,040.00	\$ -	0 - Closed	11.1131.900.3020.633
63220268	B & H PHOTO & ELECTRONICS CORP.	05/24/2022	\$ 1,131.84	\$ 1,131.84	8 - Printed	10.2311.400.0070.641
17220023	BANDANA'S MISSOURI LLC - PCARD USE	05/31/2022	\$ 1,178.32	\$ 1,178.32	8 - Printed	11.1411.900.4110.641
58220182	BARNES, ERIC	05/27/2022	\$ 900.00	\$ -	0 - Closed	11.1411.900.1090.641
62220302	BIRDBRAIN TECHNOLOGIES LLC	05/11/2022	\$ 12,547.50	\$ -	0 - Closed	10.1151.805.1050.641
40220028	BRAINPOP	05/09/2022	\$ 1,167.75	\$ -	0 - Closed	10.1131.111.3020.641
50220119	BROWN CAPITAL VENTURES INC.	05/09/2022	\$ 2,239.79	\$ -	0 - Closed	11.1411.900.1050.641
58220171	CALLIER'S CATERING	05/11/2022	\$ 3,400.00	\$ -	0 - Closed	11.1411.900.1090.641
92220021	CAMBRIDGE UNIVERSITY PRESS -PCARD	05/16/2022	\$ 1,381.83	\$ -	0 - Closed	10.1614.205.0075.643
50220122	CART-KING INTERNATIONAL HOLDINGS I	05/16/2022	\$ 4,898.00	\$ 4,898.00	8 - Printed	40.1321.113.1050.654
58220170	CASUAL TEES	05/11/2022	\$ 791.75	\$ -	0 - Closed	11.1411.900.1090.641
58220173	CASUAL TEES	05/18/2022	\$ 1,199.35	\$ -	0 - Closed	11.1411.900.1090.641
56220210	CASUAL TEES	05/02/2022	\$ 1,491.00	\$ -	0 - Closed	10.2411.111.1075.641
63220259	CDW LLC	05/11/2022	\$ 10,846.64	\$ -	0 - Closed	10.2331.510.0070.641
92220019	CENGAGE LEARNING, INC	05/05/2022	\$ 3,276.00	\$ -	0 - Closed	10.1614.205.0075.643
39220039	CENPRO SERVICES, INC	05/17/2022	\$ 4,000.00	\$ 1,448.30	8 - Printed	10.2542.555.0085.633
39220038	CENPRO SERVICES, INC	05/05/2022	\$ 6,000.00	\$ -	0 - Closed	10.2542.555.0085.633
85220348	CENPRO SERVICES, INC	05/23/2022	\$ 6,000.00	\$ -	0 - Closed	10.0000.000.0000.215
12220015	CHAPMAN, CARRIE	05/02/2022	\$ 1,099.50	\$ -	0 - Closed	11.1411.900.4120.641
50220110	CHIPOTLE MEXICAN GRILL, INC.	05/03/2022	\$ 1,489.25	\$ 1,489.25	8 - Printed	11.1411.900.1050.641
50220113	CHOE, HYEON	05/05/2022	\$ 1,051.75	\$ -	0 - Closed	11.1411.900.1050.631
2220039	CLAYMONT SCHOOL PARENT TEACHER C	05/23/2022	\$ 1,000.00	\$ -	0 - Closed	11.1411.900.4040.641
85220337	COMMERCIAL ELECTRIC MOTOR SER	05/02/2022	\$ 1,948.53	\$ -	0 - Closed	10.2542.552.0085.633
79220046	COMMUNITY PRODUCTS LLC	05/27/2022	\$ 1,840.00	\$ 1,840.00	8 - Printed	10.3512.208.7500.641
79220043	COMMUNITY PRODUCTS LLC	05/27/2022	\$ 1,880.00	\$ 1,880.00	8 - Printed	40.3512.208.7500.654
79220044	COMMUNITY PRODUCTS LLC	05/27/2022	\$ 1,946.00	\$ 1,946.00	8 - Printed	10.3512.208.7500.641
79220040	COMMUNITY PRODUCTS LLC	05/26/2022	\$ 5,850.00	\$ 5,850.00	8 - Printed	40.3512.208.7500.654
79220045	COMMUNITY PRODUCTS LLC	05/27/2022	\$ 6,110.00	\$ 6,110.00	8 - Printed	40.3512.208.7500.654
79220039	COMMUNITY PRODUCTS LLC	05/26/2022	\$ 7,379.00	\$ 7,379.00	8 - Printed	40.3512.208.7500.654
79220041	COMMUNITY PRODUCTS LLC	05/26/2022	\$ 11,567.00	\$ 11,567.00	8 - Printed	40.3512.208.7500.654
85220340	COMPI DISTRIBUTORS, INC	05/09/2022	\$ 5,620.89	\$ -	0 - Closed	10.2222.111.4245.641
56220213	CONCOURSE TEAM EXPRESS LLC	05/18/2022	\$ 598.00	\$ -	0 - Closed	11.1421.900.1075.641
56220219	CONCOURSE TEAM EXPRESS LLC	05/31/2022	\$ 632.75	\$ -	0 - Closed	11.1421.900.1075.641
58220181	CONCOURSE TEAM EXPRESS LLC	05/27/2022	\$ 780.00	\$ -	0 - Closed	11.1421.900.1090.641
58220172	CONCOURSE TEAM EXPRESS LLC	05/18/2022	\$ 873.25	\$ 873.25	8 - Printed	10.1421.117.1090.641
50220132	CONCOURSE TEAM EXPRESS LLC	05/31/2022	\$ 1,125.00	\$ 1,125.00	8 - Printed	11.1421.900.1050.641
50220128	CONCOURSE TEAM EXPRESS LLC	05/23/2022	\$ 1,220.00	\$ 1,220.00	8 - Printed	11.1421.900.1050.641
50220131	CONCOURSE TEAM EXPRESS LLC	05/31/2022	\$ 1,279.00	\$ 1,279.00	8 - Printed	11.1421.900.1050.641
58220159	CONCOURSE TEAM EXPRESS LLC	05/03/2022	\$ 2,700.00	\$ -	0 - Closed	10.1421.117.1090.641

PO#	Vendor Name	PO Date	Order Amount	Balance	Status	1st GL Account
54220176	CONCOURSE TEAM EXPRESS LLC	05/11/2022	\$ 2,970.00	\$ 2,970.00	8 - Printed	10.1421.117.1080.641
54220177	CONCOURSE TEAM EXPRESS LLC	05/11/2022	\$ 3,013.20	\$ 3,013.20	8 - Printed	10.1421.117.1080.641
54220175	CONCOURSE TEAM EXPRESS LLC	05/11/2022	\$ 3,588.00	\$ 3,588.00	8 - Printed	10.1421.117.1080.641
58220169	CONCOURSE TEAM EXPRESS LLC	05/11/2022	\$ 4,428.00	\$ -	0 - Closed	10.1421.117.1090.641
65220041	CONSOLIDATED DIST NO 6	05/05/2022	\$ 3,404.16	\$ -	0 - Closed	10.2555.301.0070.634
63220265	CONVERGEONE, INC	05/23/2022	\$ 2,320.00	\$ 2,320.00	8 - Printed	10.2331.510.0070.631
63220262	CONVERGEONE, INC	05/16/2022	\$ 3,499.00	\$ 3,499.00	8 - Printed	10.2331.510.0070.641
63220260	CONVERGEONE, INC	05/16/2022	\$ 9,467.00	\$ 9,467.00	8 - Printed	10.2331.510.0070.631
85220334	CORPORATE INTERIORS INC	05/02/2022	\$ 4,800.00	\$ 4,800.00	8 - Printed	40.2542.111.3040.652
17220024	CORPORATE SEASONINGS	05/31/2022	\$ 1,058.50	\$ 1,058.50	8 - Printed	11.1411.900.4110.641
50220130	CORPORATE SEASONINGS	05/31/2022	\$ 1,756.25	\$ -	0 - Closed	11.1411.900.1050.641
40220031	DEMCO INC	05/09/2022	\$ 2,505.99	\$ 2,505.99	8 - Printed	40.2411.111.3020.654
12220016	DRAPERIES BY MORTON MOEL	05/23/2022	\$ 2,478.00	\$ 2,478.00	8 - Printed	10.1111.111.4120.641
62220308	EASTERN MISSOURI NFL	05/16/2022	\$ 2,175.39	\$ 2,175.39	8 - Printed	10.1151.371.1080.634
36220013	EDUCATIONPLUS	05/27/2022	\$ 2,160.00	\$ 2,160.00	8 - Printed	10.1251.305.0075.631
62220306	EDUCATIONPLUS	05/12/2022	\$ 7,600.00	\$ -	0 - Closed	10.2213.805.0075.631
54220171	EVANGELICAL CHILDREN'S HOME	05/03/2022	\$ 5,000.00	\$ -	0 - Closed	11.3911.900.1080.639
62220309	FOLLETT SCHOOL SOLUTIONS, INC	05/16/2022	\$ 514.48	\$ 514.48	8 - Printed	10.1151.351.1090.643
9220013	FOLLETT SCHOOL SOLUTIONS, INC	05/18/2022	\$ 2,068.62	\$ -	0 - Closed	10.2222.122.4060.641
50220118	FOLLETT SCHOOL SOLUTIONS, INC	05/09/2022	\$ 2,588.65	\$ 2,588.65	8 - Printed	10.1151.102.1050.641
60220011	GALLAGHER BASSETT SERVICE	05/16/2022	\$ 1,000.00	\$ -	0 - Closed	10.2521.503.0070.633
56220217	GAMESTRAT INC.	05/31/2022	\$ 1,475.00	\$ 1,475.00	8 - Printed	10.1421.117.1075.641
48220264	GEOTECHNOLOGY, INC	05/24/2022	\$ 9,000.00	\$ 5,312.99	8 - Printed	48.4031.618.0059.652
48220265	GEOTECHNOLOGY, INC	05/24/2022	\$ 9,000.00	\$ 9,000.00	8 - Printed	48.4031.618.1090.652
48220266	GEOTECHNOLOGY, INC	05/24/2022	\$ 9,000.00	\$ 4,118.73	8 - Printed	48.4031.618.3040.652
48220267	GEOTECHNOLOGY, INC	05/24/2022	\$ 9,000.00	\$ 9,000.00	8 - Printed	48.4031.618.1050.652
50220115	GERDEMAN CAMPS LLC	05/05/2022	\$ 825.00	\$ -	0 - Closed	11.1421.900.1050.641
63220269	GFI DIGITAL INC	05/24/2022	\$ 15,000.00	\$ 15,000.00	8 - Printed	10.0000.000.0000.212
85220345	GORDON'S PLASTICS	05/18/2022	\$ 2,000.00	\$ -	0 - Closed	10.2542.552.0085.641
85220346	GRAYBAR ELEC CO	05/18/2022	\$ 3,500.60	\$ 3,500.60	8 - Printed	10.2542.552.0085.641
6220031	GREENWOOD PUBLISHING GROUP, LLC	05/24/2022	\$ 1,125.00	\$ 1,125.00	8 - Printed	10.1251.805.4220.641
6220030	HALF-PINT KIDS, INC.	05/24/2022	\$ 2,376.00	\$ -	0 - Closed	10.1251.805.4220.641
58220167	HEATH, JOHN	05/11/2022	\$ 1,611.90	\$ -	0 - Closed	10.2411.111.1090.641
62220300	HIGH RIDGE SEWING CTR INC.	05/05/2022	\$ 3,599.91	\$ -	0 - Closed	10.1331.805.1075.641
63220266	IMS GLOBAL LEARNING CONSORTIUM, IN	05/23/2022	\$ 5,000.00	\$ -	0 - Closed	10.2331.510.0070.637
50220114	JOSTENS INC	05/05/2022	\$ 1,316.00	\$ -	0 - Closed	11.1411.900.1050.641
56220211	KAEMMERLEN PARTS & SERV.	05/09/2022	\$ 1,500.00	\$ -	0 - Closed	10.1331.115.1075.633
85220349	KOCH AIR LLC	05/23/2022	\$ 3,840.98	\$ -	0 - Closed	10.2542.552.0085.641
50220129	KRUEGER POTTERY	05/24/2022	\$ 1,370.50	\$ -	0 - Closed	11.1151.900.1050.633
85220335	LEAK STOPPERS ROOFING LLC	05/02/2022	\$ 3,000.00	\$ 3,000.00	8 - Printed	10.2542.552.0085.633
6220032	LEXIA VOYAGER SOPRIS, INC.	05/24/2022	\$ 1,188.00	\$ 1,188.00	8 - Printed	10.1251.805.4220.641
73220046	LOU FUSZ SOCCER CLUB	05/09/2022	\$ 6,750.00	\$ -	0 - Closed	11.1421.900.0075.633
32220011	MARELLY LEASING LLC	05/16/2022	\$ 952.85	\$ 952.85	8 - Printed	10.2134.303.0075.641
62220312	MARKERBOARD PEOPLE	05/27/2022	\$ 2,520.00	\$ -	0 - Closed	10.1131.351.3000.641
62220311	MATH LEARNING CENTER	05/26/2022	\$ 12,947.00	\$ -	0 - Closed	10.2212.805.0075.641
60220012	MCCARTHY HOLDINGS INC	05/27/2022	\$ 3,863.98	\$ -	0 - Closed	10.0000.000.0000.215
50220127	MO COTTON EXCHANGE	05/23/2022	\$ 1,800.00	\$ -	0 - Closed	11.1421.900.1050.641
85220341	MPGTANDEM	05/09/2022	\$ 679.35	\$ -	0 - Closed	10.2542.552.0085.641
85220342	MPGTANDEM	05/10/2022	\$ 2,076.15	\$ -	0 - Closed	10.2542.551.0085.641

PO#	Vendor Name	PO Date	Order Amount	Balance	Status	1st GL Account
45220021	MPGTANDEM	05/26/2022	\$ 2,708.50	\$ 2,708.50	8 - Printed	11.1411.900.3040.641
45220020	MPGTANDEM	05/16/2022	\$ 2,928.00	\$ -	0 - Closed	11.2411.900.3040.641
58220178	MTI ENTERPRISES INC.	05/27/2022	\$ 2,710.00	\$ 2,710.00	8 - Printed	11.1411.900.1090.639
68220005	NCS PEARSON. INC.	05/09/2022	\$ 10,250.00	\$ 10,250.00	8 - Printed	10.1211.382.0075.641
97220061	NEUMAYER EQUIPMENT COMPANY, INC	05/06/2022	\$ 10,535.95	\$ 10,535.95	8 - Printed	10.2552.512.0080.633
36220012	NEUROMOTION INC.	05/24/2022	\$ 1,344.00	\$ -	0 - Closed	10.1251.305.0075.641
40220027	NEWSELA INC	05/09/2022	\$ 8,975.00	\$ -	0 - Closed	10.1131.111.3020.641
58220158	NOTHING BUNDT CAKES	05/03/2022	\$ 1,042.50	\$ -	0 - Closed	11.1411.900.1090.641
8220048	OFFICE ESSENTIALS INCORPORATED	05/16/2022	\$ 583.89	\$ -	0 - Closed	10.2411.111.4100.641
79220035	OFFICE ESSENTIALS INCORPORATED	05/24/2022	\$ 830.37	\$ 830.37	8 - Printed	10.3512.207.7500.641
54220173	OFFICE ESSENTIALS INCORPORATED	05/09/2022	\$ 861.11	\$ 861.11	8 - Printed	10.1151.114.1080.641
50220111	OFFICE ESSENTIALS INCORPORATED	05/03/2022	\$ 1,071.72	\$ -	0 - Closed	10.1151.102.1050.641
58220164	OFFICE ESSENTIALS INCORPORATED	05/09/2022	\$ 1,270.95	\$ -	0 - Closed	40.2411.111.1090.654
60220010	OFFICE ESSENTIALS INCORPORATED	05/09/2022	\$ 1,914.10	\$ 1,914.10	8 - Printed	10.2521.411.0070.641
43220034	OFFICE ESSENTIALS INCORPORATED	05/09/2022	\$ 2,706.55	\$ -	0 - Closed	10.1131.111.3080.641
15220008	OFFICE ESSENTIALS INCORPORATED	05/16/2022	\$ 3,029.92	\$ 3,029.92	8 - Printed	10.1111.111.4030.641
45220022	OFFICE ESSENTIALS INCORPORATED	05/27/2022	\$ 3,969.92	\$ 3,969.92	8 - Printed	10.2411.111.3040.641
54220170	OFFICE ESSENTIALS INCORPORATED	05/03/2022	\$ 4,801.15	\$ 4,801.15	8 - Printed	10.1151.102.1080.641
36220010	OFFICE ESSENTIALS INCORPORATED	05/02/2022	\$ 7,744.41	\$ -	0 - Closed	10.1251.305.0075.641
79220034	OFFICE ESSENTIALS INCORPORATED	05/11/2022	\$ 9,401.71	\$ 9,401.71	8 - Printed	10.3512.208.7500.641
43220033	OFFICE ESSENTIALS INCORPORATED	05/03/2022	\$ 9,668.97	\$ 9,668.97	8 - Printed	10.1131.111.3080.641
58220166	OFFICE ESSENTIALS INCORPORATED	05/11/2022	\$ 10,300.31	\$ -	0 - Closed	10.2411.111.1090.641
83220121	OVERDRIVE INC.	05/06/2022	\$ 7,747.00	\$ -	0 - Closed	10.2222.355.0075.645
71220019	PAPPAS, CYNTHIA K.	05/27/2022	\$ 1,440.00	\$ -	0 - Closed	10.2322.409.0070.631
58220176	PAPPY'S SOUTH LLC	05/26/2022	\$ 2,796.75	\$ 2,796.75	8 - Printed	11.2411.900.1090.641
79220036	PARENTS AS TEACHERS NATL	05/26/2022	\$ 1,125.00	\$ -	0 - Closed	10.3511.207.7500.631
79220037	PARENTS AS TEACHERS NATL	05/26/2022	\$ 1,125.00	\$ -	0 - Closed	10.3511.207.7500.631
79220038	PARENTS AS TEACHERS NATL	05/26/2022	\$ 1,125.00	\$ -	0 - Closed	10.3511.207.7500.631
50220116	PEPSI-COLA METROPOLITAN BOTTLING C	05/05/2022	\$ 1,000.00	\$ -	0 - Closed	11.1411.900.1050.641
58220174	PEPSI-COLA METROPOLITAN BOTTLING C	05/18/2022	\$ 3,400.00	\$ -	0 - Closed	11.1411.900.1090.641
71220017	PHENICIE, SHANE	05/17/2022	\$ 1,300.00	\$ -	0 - Closed	10.2322.409.0070.639
43220035	PHENICIE, SHANE	05/31/2022	\$ 1,935.00	\$ -	0 - Closed	10.2411.111.3080.639
92220020	PIFER-BRIGHAM, LLC	05/09/2022	\$ 2,016.00	\$ -	0 - Closed	10.1614.205.0075.643
58220179	PJE PRINTING, INC	05/27/2022	\$ 1,425.00	\$ -	0 - Closed	11.2411.900.1090.641
58220177	PLAYSCRIPTS INC	05/26/2022	\$ 1,390.00	\$ 1,390.00	8 - Printed	11.1411.900.1090.639
84220006	POWERSCHOOL HOLDINGS LLC	05/27/2022	\$ 7,350.00	\$ -	0 - Closed	10.1221.308.0070.641
54220181	PSB OFFICIATING SERVICES LLC	05/16/2022	\$ 1,716.00	\$ -	0 - Closed	11.1421.900.1080.639
23220037	REALLY GOOD STUFF	05/09/2022	\$ 599.34	\$ -	0 - Closed	10.1111.111.4190.641
54220174	RIDDELL ALL AMERICAN	05/11/2022	\$ 3,349.95	\$ 3,349.95	8 - Printed	10.1421.111.1080.641
41220029	RINGLE, SARAH	05/18/2022	\$ 1,550.00	\$ -	0 - Closed	10.2411.111.3060.641
97220063	ROBOTRONICS INC	05/26/2022	\$ 11,353.00	\$ 11,353.00	8 - Printed	40.2552.512.0080.654
75220045	SAGEVIEW CONSULTING GROUP, LLC	05/24/2022	\$ 4,800.00	\$ -	0 - Closed	10.2311.501.0070.631
13220012	SCHOLASTIC 3725	05/09/2022	\$ 1,155.14	\$ -	0 - Closed	11.1411.900.4180.641
9220012	SCHOLASTIC 3725	05/09/2022	\$ 1,607.83	\$ -	0 - Closed	11.1411.900.4060.641
18220007	SCHOLASTIC 3725	05/02/2022	\$ 2,574.77	\$ -	0 - Closed	10.2222.122.4235.644
11220013	SCHOLASTIC 3725	05/03/2022	\$ 4,047.09	\$ -	0 - Closed	11.1411.900.4180.641
6220029	SCHOLASTIC 3725	05/18/2022	\$ 5,000.00	\$ -	0 - Closed	11.1411.900.4220.641
2220038	SCHOLASTIC 3725	05/23/2022	\$ 6,177.08	\$ -	0 - Closed	11.1411.900.4040.641
8220050	SCHOOL SPECIALTY,LLC	05/16/2022	\$ 583.14	\$ -	0 - Closed	10.1111.110.4100.641

PO#	Vendor Name	PO Date	Order Amount	Balance	Status	1st GL Account
6220033	SCHOOL SPECIALTY,LLC	05/31/2022	\$ 1,439.38	\$ 1,439.38	8 - Printed	10.1111.110.4220.641
8220052	SCHOOL SPECIALTY,LLC	05/18/2022	\$ 1,461.80	\$ 1,444.85	8 - Printed	10.1111.110.4100.641
23220036	SCHOOL SPECIALTY,LLC	05/09/2022	\$ 8,838.34	\$ 8,838.34	8 - Printed	10.1111.111.4190.641
56220215	SHERATON WEST PORT INN	05/23/2022	\$ 1,525.12	\$ -	0 - Closed	11.1411.900.1075.639
50220123	SHERATON WEST PORT INN	05/18/2022	\$ 5,637.04	\$ -	0 - Closed	11.1411.900.1050.639
41220028	SIX FLAGS	05/02/2022	\$ 6,551.00	\$ -	0 - Closed	11.1411.900.3060.639
46220016	SIX FLAGS	05/06/2022	\$ 8,080.12	\$ -	0 - Closed	11.1411.900.3000.639
40220026	SIX FLAGS	05/03/2022	\$ 12,371.94	\$ 4,811.31	8 - Printed	11.1131.900.3020.639
62220301	SOCIAL STUDIES SCHOOL SERVICE	05/06/2022	\$ 8,735.90	\$ -	0 - Closed	10.1131.351.3000.641
85220336	SPARTAN TOOL LLC	05/02/2022	\$ 1,402.50	\$ 1,402.50	8 - Printed	10.2542.552.0085.641
40220032	ST. LOUIS CARDINALS -GROUP SALES	05/09/2022	\$ 1,459.00	\$ -	8 - Printed	11.1411.900.3020.639
20220031	ST. LOUIS CARDINALS -GROUP SALES	05/09/2022	\$ 7,296.00	\$ -	0 - Closed	11.1411.900.4245.641
62220299	ST. LOUIS CNTY TREASURE	05/03/2022	\$ 1,042.17	\$ -	0 - Closed	10.3911.806.0075.631
50220121	ST. LOUIS COMM COLLEGE-MERAMEC	05/11/2022	\$ 1,500.00	\$ -	0 - Closed	11.1411.900.1050.641
36220014	ST. LOUIS FOOD BANK	05/31/2022	\$ 1,122.00	\$ 1,122.00	8 - Printed	11.3911.900.0075.641
65220042	ST. LOUIS FOOD BANK	05/31/2022	\$ 5,000.00	\$ 2,712.40	8 - Printed	11.3911.900.0075.641
81220020	ST. LOUIS RECHARGE AND FIRE CONTROL	05/02/2022	\$ 2,868.00	\$ 2,868.00	8 - Printed	10.2561.504.0085.633
40220030	SUNWIND SOLAR	05/09/2022	\$ 1,204.90	\$ -	0 - Closed	10.1131.106.3020.641
64220007	TAVCOM, INC	05/16/2022	\$ 1,500.00	\$ -	0 - Closed	10.2643.511.0070.631
83220122	THE NEW YORK TIMES COMPANY	05/26/2022	\$ 4,253.60	\$ -	0 - Closed	10.2222.355.1050.645
85220350	TRANE U.S. INC	05/24/2022	\$ 8,441.32	\$ -	0 - Closed	10.2542.554.0085.633
50220120	UNIV. OF MISSOURI	05/11/2022	\$ 3,500.00	\$ -	0 - Closed	11.1411.900.1050.641
45220019	USA FOR UNHCR - P CARD VENDOR ONL	05/09/2022	\$ 3,227.21	\$ -	0 - Closed	11.3911.900.3040.641
58220168	VARSITY BRANDS HOLDINGS CO., INC	05/11/2022	\$ 608.00	\$ -	0 - Closed	10.1421.117.1090.641
56220212	VARSITY BRANDS HOLDINGS CO., INC	05/18/2022	\$ 1,009.16	\$ 1,009.16	8 - Printed	11.1411.900.1075.641
54220172	VARSITY BRANDS HOLDINGS CO., INC	05/03/2022	\$ 1,168.83	\$ -	0 - Closed	10.1421.117.1080.641
50220117	VARSITY BRANDS HOLDINGS CO., INC	05/05/2022	\$ 1,350.80	\$ 1,350.80	8 - Printed	10.1421.117.1050.641
50220124	VARSITY BRANDS HOLDINGS CO., INC	05/23/2022	\$ 1,655.50	\$ 1,655.50	8 - Printed	11.1421.900.1050.641
54220182	VARSITY BRANDS HOLDINGS CO., INC	05/18/2022	\$ 2,127.50	\$ 1,107.50	8 - Printed	11.1421.900.1080.641
50220125	VARSITY BRANDS HOLDINGS CO., INC	05/23/2022	\$ 3,411.00	\$ -	0 - Closed	11.1411.900.1050.641
50220126	VARSITY BRANDS HOLDINGS CO., INC	05/23/2022	\$ 3,790.00	\$ -	0 - Closed	11.1411.900.1050.641
54220180	VARSITY BRANDS HOLDINGS CO., INC	05/16/2022	\$ 4,091.00	\$ 4,091.00	8 - Printed	11.1411.900.1080.641
50220107	VARSITY BRANDS HOLDINGS CO., INC	05/02/2022	\$ 5,925.00	\$ -	0 - Closed	11.1411.900.1050.639
54220169	VARSITY BRANDS HOLDINGS CO., INC	05/02/2022	\$ 6,105.00	\$ 407.00	8 - Printed	11.1411.900.1080.639
54220179	VARSITY BRANDS HOLDINGS CO., INC	05/16/2022	\$ 6,387.85	\$ 6,387.85	8 - Printed	11.1411.900.1080.641
54220178	VARSITY BRANDS HOLDINGS CO., INC	05/13/2022	\$ 7,940.00	\$ -	0 - Closed	11.1411.900.1080.639
54220183	VARSITY BRANDS HOLDINGS CO., INC	05/24/2022	\$ 10,000.00	\$ 10,000.00	8 - Printed	11.1411.900.1080.641
50220109	VERNIER SOFTWARE & TECHNOLOGY LLC	05/03/2022	\$ 1,987.20	\$ -	0 - Closed	10.1151.106.1050.641
8220046	VIRCO MFG CORP	05/05/2022	\$ 750.40	\$ -	0 - Closed	10.1111.111.4100.641
56220218	VIVIANO'S CHESTERFIELD	05/31/2022	\$ 1,411.59	\$ 1,411.59	8 - Printed	10.2411.111.1075.641
48220261	W. SCHILLER & CO., INC.	05/18/2022	\$ 2,997.00	\$ 2,997.00	8 - Printed	48.2331.618.0070.654
74220026	WESTERN KENTUCKY UNIVERSITY	05/24/2022	\$ 9,100.00	\$ 9,100.00	8 - Printed	10.2213.352.1050.631
73220047	WOODSMILL TENNIS CLU	05/11/2022	\$ 2,000.00	\$ -	0 - Closed	10.1421.204.1080.631
58220163	WORLD'S FINEST CHOCOLATE INC	05/09/2022	\$ 1,881.00	\$ -	0 - Closed	11.1411.900.1090.641
TOTAL:			\$ 174,154.17			

**\$15,000+
MAY FY22**

PO#	Vendor Name	PO Date	Order Amount	Balance	Status	1st GL Account
62220305	JUNIOR ACHIEVEMENT OF	05/11/2022	\$ 15,171.00	\$ -	0 - Closed	10.1111.362.4100.639
17220021	FRY & ASSOCIATES INC	05/06/2022	\$ 16,619.00	\$ 16,619.00	8 - Printed	41.1411.900.4110.654
63220258	CONVERGEONE, INC	05/09/2022	\$ 16,890.00	\$ 8,445.00	8 - Printed	10.2331.510.0070.631
85220344	SIEVEKING, INCORPORATED	05/11/2022	\$ 17,574.91	\$ -	0 - Closed	10.2541.556.0085.648
85220352	SIEVEKING, INCORPORATED	05/31/2022	\$ 17,599.79	\$ -	0 - Closed	10.2541.556.0085.648
58220175	COMPUTER AIDED TECHNOLOGY, LLC	05/24/2022	\$ 18,870.00	\$ -	0 - Closed	40.1361.116.1090.654
63220257	SCENARIO LEARNING LLC	05/09/2022	\$ 18,940.11	\$ -	0 - Closed	10.0000.000.0000.170
71220018	SHERATON WEST PORT INN	05/24/2022	\$ 19,822.32	\$ -	0 - Closed	10.2322.409.0070.639
36220011	ALIVE & WELL COMMUNITIES	05/16/2022	\$ 20,000.00	\$ -	0 - Closed	10.2213.305.0075.631
62220304	MACMILLAN HOLDINGS, LLC	05/11/2022	\$ 20,270.57	\$ -	0 - Closed	10.1151.351.1050.643
17220022	OFFICE ESSENTIALS INCORPORATED	05/06/2022	\$ 20,611.57	\$ 20,611.57	8 - Printed	40.2411.111.4110.654
62220303	SPHERO INC.	05/11/2022	\$ 21,600.00	\$ 21,600.00	8 - Printed	10.1111.805.4020.641
73220048	RIDDELL ALL AMERICAN	05/24/2022	\$ 21,656.80	\$ -	0 - Closed	10.1421.204.0075.641
81220021	FORD HOTEL & SUPPLY COMPANY	05/16/2022	\$ 22,108.19	\$ 22,108.19	8 - Printed	40.2561.504.0085.654
56220216	PIROS SIGNS,INC	05/26/2022	\$ 24,238.55	\$ -	0 - Closed	41.1411.900.1075.654
46220017	OFFICE ESSENTIALS INCORPORATED	05/31/2022	\$ 28,324.04	\$ 28,324.04	8 - Printed	10.1131.111.3000.641
79220042	COMMUNITY PRODUCTS LLC	05/26/2022	\$ 29,640.00	\$ 29,640.00	8 - Printed	40.3512.208.7500.654
65220040	VOLUNTARY INTERDISTRICT CHOICE	05/02/2022	\$ 30,000.00	\$ 11,391.58	8 - Printed	10.2555.301.0070.634
83220123	OVERDRIVE INC.	05/26/2022	\$ 31,000.00	\$ -	0 - Closed	10.2222.355.0075.641
73220049	CONCOURSE TEAM EXPRESS LLC	05/24/2022	\$ 31,595.00	\$ 31,595.00	8 - Printed	10.1421.204.0075.641
97220064	ENERGY PETROLEUM COMPANY	05/26/2022	\$ 32,185.05	\$ -	0 - Closed	10.2552.512.0080.648
97220062	ENERGY PETROLEUM COMPANY	05/09/2022	\$ 34,322.55	\$ -	0 - Closed	10.2552.512.0080.648
48220262	MCCARTHY HOLDINGS INC	05/19/2022	\$ 35,692.00	\$ -	0 - Closed	48.4031.618.0085.652
62220307	CENGAGE LEARNING, INC	05/12/2022	\$ 37,008.40	\$ -	0 - Closed	10.1151.351.1050.643
48220259	MCCARTHY HOLDINGS INC	05/02/2022	\$ 41,134.00	\$ -	0 - Closed	48.4031.618.0085.652
50220133	PIROS SIGNS,INC	05/31/2022	\$ 42,089.08	\$ 21,044.54	8 - Printed	40.2411.111.1050.654
62220310	DISCOVERY EDUCATION, INC	05/24/2022	\$ 53,000.00	\$ -	0 - Closed	10.1131.351.0075.641
75220044	CASSIDY TURLEY MIDWEST INC	05/24/2022	\$ 65,817.00	\$ -	0 - Closed	10.0000.000.0000.170
48220263	W. SCHILLER & CO., INC.	05/24/2022	\$ 77,880.99	\$ 77,880.99	8 - Printed	48.2331.618.0070.654
63220270	JOURNEYED.COM, INC	05/24/2022	\$ 101,388.00	\$ 101,388.00	8 - Printed	10.0000.000.0000.170
63220272	POWERSCHOOL HOLDINGS LLC	05/24/2022	\$ 151,200.00	\$ -	0 - Closed	10.0000.000.0000.170
63220271	COMPUTER INFORMATION CONCEPTS	05/24/2022	\$ 230,442.00	\$ -	0 - Closed	10.0000.000.0000.170
81220022	THE BOELTER COMPANIES, INC.	05/31/2022	\$ 236,750.07	\$ 236,750.07	8 - Printed	40.2561.504.0085.654
48220258	MCCARTHY HOLDINGS INC	05/02/2022	\$ 350,000.00	\$ 326,013.27	8 - Printed	48.4051.618.4100.652
48220260	MCCARTHY HOLDINGS INC	05/13/2022	\$ 500,000.00	\$ 500,000.00	8 - Printed	48.4051.618.1075.652
85220338	DAIKIN-TMI,LLC	05/04/2022	\$ 758,722.00	\$ 758,722.00	8 - Printed	10.2542.551.0085.641
TOTAL:			\$ 3,190,162.99			

SPOT MARKET REPORT - MAY 22

PO #	Create Date	Vendor	Name	Comm. Code	Qty.	UOM	Unit Price	Description	Object	Account	Amt
61220016	08/19/21	809084	OFFICE ESSENTIALS INC.	202	840	EACH	\$ 28.90	8.5 x 11 WHITE COPY PAPER - 30% RECYCLED PAPER - BOISE ASPEN 30	1615	\$	24,276.00
61220017	08/19/21	809084	OFFICE ESSENTIALS INCORPORATED	202	80	EACH	\$ 28.90	8.5 x 11 WHITE COPY PAPER - 30% RECYCLED PAPER - BOISE ASPEN 30	1615	\$	2,312.00
61220017	08/19/21	809084	OFFICE ESSENTIALS INCORPORATED	202	80	EACH	\$ 28.90	8.5 x 11 WHITE COPY PAPER - 30% RECYCLED PAPER - BOISE ASPEN 30	1615	\$	2,312.00
61220021	10/14/21	809084	OFFICE ESSENTIALS INCORPORATED	202	840	EACH	\$ 30.90	8.5 x 11 WHITE COPY PAPER - 30% RECYCLED PAPER - BOISE ASPEN 30	1615	\$	25,956.00
61220022	10/28/21	809084	OFFICE ESSENTIALS INCORPORATED	202	200	EACH	\$ 30.90	8.5 x 11 WHITE COPY PAPER - 30% RECYCLED PAPER - BOISE ASPEN 30	1615	\$	6,180.00
61220024	12/07/2021	809084	OFFICE ESSENTIALS INCORPORATED	202	840	EACH	\$ 32.15	8.5 x 11 WHITE COPY PAPER - 30% RECYCLED PAPER - BOISE ASPEN 30	1615	\$	27,006.00
61220025	01/05/2022	809084	OFFICE ESSENTIALS INCORPORATED	202	120	EACH	\$ 33.15	8.5 x 11 WHITE COPY PAPER - 30% RECYCLED PAPER - BOISE ASPEN 30	1615	\$	3,978.00
61220027	01/21/2022	626843	DOCUMENT IMAGING DIMENSIONS, INC	202	840	EACH	\$ 32.87	8.5 x 11 WHITE COPY PAPER - 30% RECYCLED PAPER - BOISE ASPEN 30	1615	\$	27,610.80
85220047	07/07/21	910351	SIEVEKING, INCORPORATED	400	1469.4	EACH	\$ 2.27	NO LEAD 87 OCT RFG	6486	\$	3,342.00
85220047					1	EACH	\$ 260.77	FEDERAL AND STATE TAXES AND FEES	6486	\$	260.77
85220047					431	EACH	\$ 2.27	NO LEAD 87 OCT RFG	6486	\$	980.27
85220047					1	EACH	\$ 79.88	FEDERAL AND STATE TAXES AND FEES	6486	\$	79.88
85220094	07/16/21	910351	SIEVEKING, INCORPORATED	400	250.1	EACH	\$ 2.33	NO LEAD 87 OCT RFG	6486	\$	582.91
85220094					1	EACH	\$ 45.97	FEDERAL AND STATE TAXES AND FEES	6486	\$	45.97
85220094					358.8	EACH	\$ 2.28	UL SULFUR HI-WAY DIESEL	6486	\$	816.27
85220094					1	EACH	\$ 64.90	FEDERAL AND STATE TAXES AND FEES	6486	\$	64.90
85220094					1580	EACH	\$ 2.33	NO LEAD 87 OCT RFG	6486	\$	3,682.51
85220094					1	EACH	\$ 280.04	FEDERAL AND STATE TAXES AND FEES	6486	\$	280.04
85220128	08/04/21	910351	SIEVEKING, INCORPORATED	400	429.2	EACH	\$ 2.37	NO LEAD 87 OCT RFG	6486	\$	1,017.20
85220128					1	EACH	\$ 77.17	FEDERAL AND STATE TAXES AND FEES	6486	\$	77.17
85220128					331.2	EACH	\$ 2.31	UL SULFUR HI-WAY DIESEL	6486	\$	765.07
85220128					1	EACH	\$ 60.10	FEDERAL AND STATE TAXES AND DUES	6486	\$	60.10
85220140	08/18/21	910351	SIEVEKING, INCORPORATED	400	3000	EACH	\$ 2.38	NO LEAD 87 OCT RFG	6486	\$	7,140.90
85220140					1	EACH	\$ 527.40	FEDERAL AND STATE TAXES AND FEES	6486	\$	527.40
85220140					432.2	EACH	\$ 2.38	NO LEAD 87 OCT RFG	6486	\$	1,028.77
85220140					1	EACH	\$ 77.69	FEDERAL AND STATE TAXES AND FEES	6486	\$	77.69
85220140					319.5	EACH	\$ 2.36	UL SULFUR HI WAY DIESEL	6486	\$	753.00
85220140					1	EACH	\$ 58.06	FEDERAL AND STATE TAXES AND FEES	6486	\$	58.06
85220148	08/27/21	910351	SIEVEKING, INCORPORATED	400	395.9	EACH	\$ 2.37	NO LEAD 87 OCT RFG	6486	\$	936.62
85220148					1	EACH	\$ 71.37	FEDERAL AND STATE TAXES AND FEES	6486	\$	71.37
85220148					300.3	EACH	\$ 2.28	UL SULFUR HI-WAY DIESEL	6486	\$	684.68

PO #	Create Date	Vendor Name	Comm. Code	Qty.	UOM	Unit Price	Description	Object	Account Amt
85220148				1	EACH	\$ 54.71	FEDERAL AND STATE TAXES AND FEES	6486	\$ 54.71
85220148				2140	EACH	\$ 2.37	NO LEAD 87 OCT RFG	6486	\$ 5,062.81
85220148				1	EACH	\$ 377.59	FEDERAL AND STATE TAXES AND FEES	6486	\$ 377.59
85220162	09/15/21	910351 SIEVEKING, INCORPORATED	400	419.3	EACH	\$ 2.37	NO LEAD 87 OCT RFG	6486	\$ 993.03
85220162				1	EACH	\$ 75.44	FEDERAL AND STATE TAXES AND FEES	6486	\$ 75.44
85220162				273.7	EACH	\$ 2.35	UL SULFUR HI-WAY DIESEL	6486	\$ 642.65
85220162				1	EACH	\$ 50.08	FEDERAL AND STATE TAXES AND FEES	6486	\$ 50.08
85220162				2210	EACH	\$ 2.37	NO LEAD 87 OCT RFG	6486	\$ 5,233.94
85220162				1	EACH	\$ 389.78	FEDERAL AND STATE TAXES AND FEES	6486	\$ 389.78
85220201	10/11/21	910351 SIEVEKING, INCORPORATED	400	405.9	EACH	\$ 2.32	NO LEAD 87 OCT RFG	6486	\$ 940.51
85220201				1	EACH	\$ 73.11	FEDERAL AND STATE TAXES AND FEES	6486	\$ 73.11
85220201				406.7	EACH	\$ 2.43	UL SULFUR HI-WAY DIESEL	6486	\$ 989.75
85220201				1	EACH	\$ 73.25	FEDERAL AND STATE TAXES AND FEES	6486	\$ 73.25
85220201				3100.2	EACH	\$ 2.32	NO LEAD 87 OCT RFG	6486	\$ 7,183.47
85220201				1	EACH	\$ 544.85	FEDERAL AND STATE TAXES AND FEES	6486	\$ 544.85
85220204	10/22/21	642477 ENERGY PETROLEUM COMPANY	400	444.2	EACH	\$ 2.50	NO LEAD 87 OCT RFG	6486	\$ 1,110.50
85220204				1	EACH	\$ 89.78	FEDERAL AND STATE TAXES AND FEES	6486	\$ 89.78
85220204				300.1	EACH	\$ 2.65	PREMIUM LOW SULFUR CLEAR DIESEL	6486	\$ 795.27
85220204				1	EACH	\$ 60.72	FEDERAL AND STATE TAXES AND FEES	6486	\$ 60.72
85220204				3961.7	EACH	\$ 2.50	NO LEAD 87 OCT RFG	6486	\$ 9,904.25
85220204				1	EACH	\$ 800.77	FEDERAL AND STATE TAXES AND FEES	6486	\$ 800.77
85220227	11/16/21	910351 SIEVEKING, INCORPORATED	400	4559	EACH	\$ 2.48	NO LEAD 87 OCT RFG	6486	\$ 11,304.50
85220227				1	EACH	\$ 912.95	FEDERAL AND STATE TAXES AND FEES	6486	\$ 912.95
85220227				412.5	EACH	\$ 2.48	NO LEAD 87 OCT RFG	6486	\$ 1,022.84
85220227				1	EACH	\$ 84.57	FEDERAL AND STATE TAXES AND FEES	6486	\$ 84.57
85220227				300	EACH	\$ 2.57	UL SULFUR HI-WAY DIESEL	6486	\$ 770.82
85220227				1	EACH	\$ 62.16	FEDERAL AND STATE TAXES AND FEES	6486	\$ 62.16
85220243	12/07/2021	800559 KIESEL COMPANY	400	5082	EACH	\$ 2.42	NO LEAD 87 OCT RFG	6486	\$ 12,298.44
85220243				1	EACH	\$ 1,029.48	FEDERAL AND STATE TAXES AND FEES	6486	\$ 1,029.48
85220243				425.2	EACH	\$ 2.42	NO LEAD 87 OCT RFG	6486	\$ 1,028.98
85220243				1	EACH	\$ 166.01	FEDERAL AND STATE TAXES AND FEES	6486	\$ 166.01
85220243				400	EACH	\$ 2.53	ULS #2 CLEAR DIESEL	6486	\$ 1,012.00
85220243				1	EACH	\$ 83.19	FEDERAL AND STATE TAXES AND FEES	6486	\$ 83.19
85220249	12/09/2021	910351 SIEVEKING, INCORPORATED	400	279.1	EACH	\$ 2.20	NO LEAD 87 OCT RFG	6486	\$ 614.24
85220249				1	EACH	\$ 58.00	FEDERAL AND STATE TAXES AND FEES	6486	\$ 58.00
85220249				150.1	EACH	\$ 2.17	ULS HI-WAY DIESEL	6486	\$ 326.42
85220249				2421	EACH	\$ 2.20	NO LEAD 87 OCT RFG	6486	\$ 5,328.14
85220249				1	EACH	\$ 487.06	FEDERAL AND STATE TAXES AND FEES	6486	\$ 487.06
85220249				1	EACH	\$ 32.30	FEDERAL AND STATE TAXES AND FEES	6486	\$ 32.30
85220261	01/11/2022	910351 SIEVEKING, INCORPORATED	400	430.8	EACH	\$ 2.40	NO LEAD 87 OCT RFG	6486	\$ 1,033.92
85220261				1	EACH	\$ 88.22	FEDERAL AND STATE TAXES AND FEES	6486	\$ 88.22

PO #	Create Date	Vendor	Name	Comm. Code	Qty.	UOM	Unit Price	Description	Object	Account	Amt
85220261					361.6	EACH	\$ 2.33	ULS HI-WAY DIESEL	6486	\$	842.53
85220261					1	EACH	\$ 74.43	FEDERAL AND STATE TAXES AND FEESQ	6486	\$	74.43
85220267	01/21/2022	642477	ENERGY PETROLEUM COMPANY	400	3910.7	EACH	\$ 2.38	NO LEAD 87 OCT RFG	6486	\$	9,307.47
85220267					1	EACH	\$ 790.47	FEDERAL AND STATE TAXES AND FEES	6486	\$	790.47
85220267					375	EACH	\$ 2.38	NO LEAD 87 OCT RFG	6486	\$	892.50
85220267					1	EACH	\$ 75.80	FEDERAL AND STATE TAXES AND FEES	6486	\$	75.80
85220267					232.9	EACH	\$ 2.57	PREMIUM LOW SULFUR CLEAR DIESEL	6486	\$	598.55
85220267					1	EACH	\$ 47.13	FEDERAL AND STATE TAXES AND FEES	6486	\$	47.13
85220275	02/01/2022	910351	SIEVEKING, INCORPORATED	400	3742	EACH	\$ 2.49	NO LEAD 87 OCT RFG	6486	\$	9,314.21
85220275					1	EACH	\$ 750.21	FEDERAL AND STATE TAXES AND FEES	6486	\$	750.21
85220275					429.1	EACH	\$ 2.49	NO LEAD 87 OCT RFG	6486	\$	1,068.07
85220275					1	EACH	\$ 87.88	FEDERAL AND STATE TAXES AND FEES	6486	\$	87.88
85220275					250.1	EACH	\$ 2.47	ULS HI-WAY DIESEL	6486	\$	618.32
85220275					1	EACH	\$ 52.22	FEDERAL AND STATE TAXES AND FEES	6486	\$	52.22
85220280	02/17/2022	910351	SIEVEKING, INCORPORATED	400	2509	EACH	\$ 2.55	NO LEAD 87 OCT RFG	6486	\$	6,403.97
85220280					1	EACH	\$ 504.59	FEDERAL AND STATE TAXES AND FEES	6486	\$	504.59
85220280					391	EACH	\$ 2.55	NO LEAD 87 OCT RFG	6486	\$	998.03
85220280					1	EACH	\$ 80.29	FEDERAL AND STATE TAXES AND FEES	6486	\$	80.29
85220280					237	EACH	\$ 2.68	ULS HI-WAY DIESEL	6486	\$	635.73
85220280					1	EACH	\$ 49.61	FEDERAL AND STATE TAXES AND FEES	6486	\$	49.61
85220282	02/17/2022	910351	SIEVEKING, INCORPORATED	400	431.6	EACH	\$ 2.75	NO LEAD 87 OCT RFG	6486	\$	1,186.51
85220282					1	EACH	\$ 88.37	FEDERAL AND STATE TAXES AND FEES	6486	\$	88.37
85220282					200.1	EACH	\$ 2.85	ULS HI-WAY DIESEL	6486	\$	570.29
85220282					1	EACH	\$ 42.25	FEDERAL AND STATE TAXES AND FEES	6486	\$	42.25
85220282					1268.8	EACH	\$ 2.75	NO LEAD 87 OCT RFG	6486	\$	3,488.06
85220282					1	EACH	\$ 257.54	FEDERAL AND STATE TAXES AND FEES	6486	\$	257.54
85220288	02/28/2022	642477	ENERGY PETROLEUM COMPANY	400	3075.1	EACH	\$ 2.72	NO LEAD 87 OCT RFG	6486	\$	8,364.27
85220288					1	EACH	\$ 621.56	FEDERAL AND STATE TAXES AND FEES	6486	\$	621.56
85220288					387.9	EACH	\$ 2.72	NO LEAD 87 OCT RFG	6486	\$	1,055.09
85220288					1	EACH	\$ 78.41	FEDERAL AND STATE TAXES AND FEES	6486	\$	78.41
85220288					250.4	EACH	\$ 2.85	ULS DIESEL WINTER	6486	\$	713.64
85220288					1	EACH	\$ 50.68	FEDERAL AND STATE TAXES AND FEES	6486	\$	50.68
85220296	03/14/2022	910351	SIEVEKING, INCORPORATED	400	1600	EACH	\$ 2.84	NO LEAD 87 OCT RFG	6486	\$	4,538.56
85220296					1	EACH	\$ 323.52	FEDERAL AND STATE TAXES AND FEES	6486	\$	323.52
85220296					399.3	EACH	\$ 2.84	NO LEAD 87 OCT RFG	6486	\$	1,132.65
85220296					1	EACH	\$ 81.94	FEDERAL AND STATE TAXES AND FEES	6486	\$	81.94
85220296					162.2	EACH	\$ 3.09	UL SULFUR HI-WAY DIESEL	6486	\$	501.85
PO #	Create Date	Vendor	Name	Comm. Code	Qty.	UOM	Unit Price	Description	Object	Account	Amt
85220296					1	EACH	\$ 34.71	FEDERAL AND STATE TAXES AND FEES	6486	\$	34.71

85220311	03/28/2022	910351	SIEVEKING, INCORPORATED	400	2646.3	EACH	\$	3.16	NO LEAD 87 OCT RFG	6486	\$	8,349.61
85220311					1	EACH	\$	531.94	FEDERAL AND STATE TAXES AND FEES	6486	\$	531.94
85220311					430.1	EACH	\$	3.16	NO LEAD 87 OCT RFG	6486	\$	1,357.05
85220311					1	EACH	\$	88.08	FEDERAL AND STATE TAXES AND FEES	6486	\$	88.08
85220311					236.1	EACH	\$	3.41	UL SULFUR HI-WAY DIESEL	6486	\$	805.60
85220311					1	EACH	\$	49.43	FEDERAL AND STATE TAXES AND FEES	6486	\$	49.43
85220322	04/18/2022	800559	KIESEL COMPANY	400	3302	EACH	\$	3.30	NO LEAD 87 OCT RFG	6486	\$	10,896.60
85220322					1	EACH	\$	669.68	FEDERAL AND STATE TAXES AND FEES	6486	\$	669.68
85220322					420.3	EACH	\$	3.30	NO LEAD 87 OCT RFG	6486	\$	1,386.99
85220322					1	EACH	\$	164.12	FEDERAL AND STATE TAXES AND FEES	6486	\$	164.12
85220322					120.5	EACH	\$	3.89	UL SULFUR DIESEL	6486	\$	468.75
85220322					1	EACH	\$	26.63	FEDERAL AND STATE TAXES AND FEES	6486	\$	26.63
85220330	04/25/2022	910351	SIEVEKING, INCORPORATED	400	3135	EACH	\$	3.40	NO LEAD FUEL FOR FACILITIES LOCATION	6486	\$	10,671.23
85220330					1	EACH	\$	629.29	STATE TAXES AND ENVIRONMENTAL FEES	6486	\$	629.29
85220330					365.1	EACH	\$	3.40	NO LEAD 87 OCT RFG FUEL FOR FERN RIDI	6486	\$	1,242.76
85220330					1	EACH	\$	72.73	STATE TAXES AND ENVIRONMENTAL FEES	6486	\$	72.73
85220330					343	EACH	\$	3.94	UL SULPHUR HI-WAY DIESEL FUEL DELIVER	6486	\$	1,351.35
85220330					1	EACH	\$	73.13	STATE TAXES AND ENVIRONMENTAL FEES	6486	\$	73.13
97220039	11/04/21	910351	SIEVEKING, INCORPORATED	500	7500	EACH	\$	2.53	PREMIUM ULTRA LOW SULFER #2 DIESEL	6486	\$	19,008.00
97220039					1	EACH	\$	16.05	FEDERAL OIL SPILL FEE	6486	\$	16.05
97220039					1	EACH	\$	7.50	MO AGI TAX PER GAL EXTRA	6486	\$	7.50
97220039					1	EACH	\$	1,275.00	MO STATE TAX PER GALLON	6486	\$	1,275.00
97220039					1	EACH	\$	5.25	MO ADG INSP FEE TAX PER GAL	6486	\$	5.25
97220039					1	EACH	\$	18.75	MO USTD TRANSP LOAD FEE TAX PER	6486	\$	18.75
85220344	05/11/2022	910351	SIEVEKING, INCORPORATED	400	4000	EACH	\$	3.56	NO LEAD 87 OCT RFG	6486		14224
85220344					1	EACH	\$	801.60	FEDERAL AND STATE TAXES AND FEES	6486		801.6
85220344					425.3	EACH	\$	3.56	NO LEAD 87 OCT RFG	6486		1512.37
85220344					1	EACH	\$	87.12	FEDERAL AND STATE TAXES AND FEES	6486		87.12
85220344					200	EACH	\$	4.54	UL SULFUR HI-WAY DIESEL	6486		907.58
85220344					1	EACH	\$	42.24	FEDERAL AND STATE TAXES AND FEES	6486		42.24
85220352	05/31/2022	910351	SIEVEKING, INCORPORATED	400	3567	EACH	\$	4.07	NO LEAD 87 OCT RFG	6486		14517.69
85220352					1	EACH	\$	715.35	FEDERAL AND STATE TAXES AND FEES	6486		715.35
85220352					333	EACH	\$	4.07	NO LEAD 87 OCT RFG	6486		1355.31
85220352					1	EACH	\$	68.73	FEDERAL AND STATE TAXES AND FEES	6486		68.73
85220352					200.1	EACH	\$	4.50	UL SLUFUR HI-WAY DIESEL	6486		900.45
85220352					1	EACH	\$	42.26	FEDERAL AND STATE TAXES AND FEES	6486		42.26
97220041	11/08/21	910351	SIEVEKING, INCORPORATED	500	7500	EACH	\$	2.38	PREMIUM ULTRA LOW SULFUR #2	6486	\$	17,883.75
97220041					1	EACH	\$	16.05	FED OIL SPILL FEE	6486	\$	16.05
97220041					1	EACH	\$	7.50	MO AGI TAX PER GAL EXTRA	6486	\$	7.50

PO #	Create Date	Vendor Name	Comm. Code	Qty.	UOM	Unit Price	Description	Object	Account Amt
97220041				7500	EACH	\$ 0.17	MO STATE TAX PER GAL	6486	\$ 1,275.00
97220041				1	EACH	\$ 5.25	MO ADG INSP FEE TAX PER GAL	6486	\$ 5.25
97220041				1	EACH	\$ 18.75	MO USTD TRANSP LOAD FEE TAX PER	6486	\$ 18.75
97220046	12/22/2021	910351 SIEVEKING, INCORPORATED	500	7500	EACH	\$ 2.23	PREMIUM ULTRA LOW SULFUR #2 DIESEL FUEL	6486	\$ 16,732.50
97220046				1	EACH	\$ 16.05	FED OIL SPILL FEE	6486	\$ 16.05
97220046				1	EACH	\$ 7.50	MO AGI TAX PER GALLON EXTRA	6486	\$ 7.50
97220046				1	EACH	\$ 1,275.00	MO STATE TAX PER GALLON	6486	\$ 1,275.00
97220046				1	EACH	\$ 5.25	MO ADG INSP FEE TAX PER GALLON	6486	\$ 5.25
97220046				1	EACH	\$ 18.75	MO USTD TRANSP LOAD FEE TAX PER GALLON	6486	\$ 18.75
97220053	02/24/2022	626035 HOME SERVICE OIL CO INC	500	7500	EACH	\$ 2.70	PREMIUM ULTRA LOW SULFUR #2 DIESEL	6486	\$ 20,222.25
97220053				7500	EACH	\$ 0.00	FED OIL SPILL FEE	6486	\$ 16.05
97220053				7500	EACH	\$ 0.00	MO AGI TAX PER GAL	6486	\$ 7.50
97220053				7500	EACH	\$ 0.17	MO STATE TAX PER GAL	6486	\$ 1,275.00
97220053				7500	EACH	\$ 0.00	MO ADG INSP. FEE TAX PER GAL	6486	\$ 5.25
97220053				7500	EACH	\$ 0.00	MO. USTD TRANSP. LOAD FEE TAX PER GAL	6486	\$ 18.75
97220055	03/10/2022	910351 SIEVEKING, INCORPORATED	500	7500	EACH	\$ 2.84	PREMIUM ULTRA LOW SULFUR, #2 DIESEL	6486	\$ 21,300.00
97220055				7500	EACH	\$ 0.00	FED. OIL SPILL FEE	6486	\$ 16.05
97220055				7500	EACH	\$ 0.00	MO. AGI TAX PER GAL.	6486	\$ 7.50
97220055				7500	EACH	\$ 0.17	MO. STATE TAX PER GAL.	6486	\$ 1,275.00
97220059	04/04/2022	642477 ENERGY PETROLEUM COMPANY	500	7500	EACH	\$ 3.88	ULTRA LOW SULFUR #2 DIESEL	6486	\$ 29,062.50
97220059				7500	EACH	\$ 0.00	FED OIL SPILL FEE	6486	\$ 16.05
97220059				7500	EACH	\$ 0.00	MO AGI TAX PER GAL	6486	\$ 7.50
97220059				7500	EACH	\$ 0.17	MO STATE TAX PER GAL	6486	\$ 1,275.00
97220059				7500	EACH	\$ 0.00	MO ADG INSP FEE TAX PER GAL	6486	\$ 5.25
97220059				7500	EACH	\$ 0.00	MO USTD TRANSP LOAD FEE	6486	\$ 18.75
97220060	04/21/2022	642477 ENERGY PETROLEUM COMPANY	500	7500	EACH	\$ 3.46	ULTRA LOW SULFUR #2 PREMIUM DIESEL	6486	\$ 25,931.25
97220060				7500	EACH	\$ 0.00	FED OIL SPILL FEE	6486	\$ 16.05
97220060				7500	EACH	\$ 0.00	MO AGI TAX PER GAL	6486	\$ 7.50
97220060				7500	EACH	\$ 0.17	MO STATE TAX PER GAL	6486	\$ 1,275.00
97220060				7500	EACH	\$ 0.00	MO ADG INSP FEE	6486	\$ 5.25
97220060				7500	EACH	\$ 0.00	MO USTD TRANSP LOAD FEE	6486	\$ 18.75
97220055				7500	EACH	\$ 0.00	MO. ADG INSP. FEE TAX PER GAL.	6486	\$ 5.25
97220055				7500	EACH	\$ 0.00	MO. USTD TRANSP. LOAD FEE	6486	\$ 18.75
97220062	05/09/2022	642477 ENERGY PETROLEUM COMPANY	500	7500	EACH	\$ 4.40	PREMIUM, ULTRA-LOW SULFUR, #2 DIESEL	6486	\$ 33,000.00
97220062				7500	EACH	\$ 0.00	FED OIL SPILL FEE	6486	\$ 16.05
97220062				7500	EACH	\$ 0.00	MO. AGI TAX	6486	\$ 7.50
97220062				7500	EACH	\$ 0.17	MO. STATE TAX PER GAL	6486	\$ 1275.00

PO #	Create Date	Vendor Name	Comm. Code	Qty.	UOM	Unit Price	Description	Object	Account Amt
97220062				7500	EACH	\$ 0.00	MO. ADG INSP FEE	6486	5.25
97220062				7500	EACH	\$ 0.00	MO. USTD TRANSP. LOAD FEE	6486	18.75
97220064	05/26/2022	642477 ENERGY PETROLEUM COMPANY	500	7500	EACH	\$ 4.12	PREMIUM, ULTRA LOW SULFER, #2 DI	6486	30862.5
97220064				7500	EACH	\$ 0.00	FED OIL SPILL FEE	6486	16.05
97220064				7500	EACH	\$ 0.00	MO. AGI TAX PER GAL	6486	7.5
97220064				7500	EACH	\$ 0.17	MO. STATE TAX PER GAL	6486	1275
97220064				7500	EACH	\$ 0.00	MO. ADG INSP. FEE TAX PER GAL	6486	5.25
97220064				7500	EACH	\$ 0.00	MO. USTD TRANSP. LOAD FEE	6486	18.75
85220151	09/01/21	625546 CENTRAL POLY-BAG CORP	401	200	EACH	\$ 17.00	TRASH CAN LINER 24" X 23" X 0.4 MIL LINEAR LOW DENSITY ONLY CLEAR - STAR SELAED (1000/CASE)	6411	\$ 3,400.00
85220152	09/01/21	914674 UNIPAK CORP.	401	400	EACH	\$ 22.45	TRASH CAN LINERS 40" X 48"-16 MICRON HIGH DENSITY ONLY - CLEAR - STAR SEALED - (250/CASE)	6411	\$ 8,980.00
85220152	09/01/21	914674 UNIPAK CORP.		800	EACH	\$ 12.95	TRASH CAN LINER - 33" X 39" - 1.3 MIL LINEAR LOW DENSITY ONLY - CLEA - STAR SEALED (100/CASE)	6411	\$ 10,360.00
85220246	12/08/2021	914674 UNIPAK CORP.	401	400	EACH	\$ 23.10	UPC #404816N 40" X 48" - 16 MICRON HIGH ENSITY ONLY - CLEAR STAR-SEALED (250/CASE) 500 CASES	6411	\$ 9,240.00
85220151	09/01/2021	625546 CENTRAL POLY-BAG CORP	401	200	EACH	\$ 17.00	TRASH CAN LINER 24" X 23" X 0.4 MIL LI	6411	\$ 3,400.00
85220152	09/01/2021	914674 UNIPAK CORP.	401	400	EACH	\$ 22.45	TRASH CAN LINERS 40" X 48"-16 MICRONI	6411	\$ 8,980.00
85220152				800	EACH	\$ 12.95	TRASH CAN LINER - 33" X 39" - 1.3 MILLIN	6411	\$ 10,360.00
85220246	12/08/2021	914674 UNIPAK CORP.	401	400	EACH	\$ 23.10	UPC #404816N 40" X 48" - 16 MICRONHIK	6411	\$ 9,240.00
85220287	02/28/2022	914674 UNIPAK CORP.	401	400	EACH	\$ 23.50	40" X 48" X 16 MICRON LARGE TRASH CAN	6411	\$ 9,400.00
85220306	03/28/2022	914674 UNIPAK CORP.	401	400	EACH	\$ 23.50	UPS #404816N TRASH CAN LINERS 40" X 4	6411	\$ 9,400.00
85220306	03/28/2022	914674 UNIPAK CORP.	401	800	EACH	\$ 13.82	UPC #4013 TRASH CAN LINERS 33" X 39" -	6411	\$ 11,056.00
Total Commodity 202 (Paper)								\$	119,630.80
Total Commodity 400 (Fuel - Facilities)								\$	191,680.93
Total Commodity 500 (Fuel - Transportation)								\$	261,080.40
Total Commodity 401 (Trash Liners)								\$	93,816.00
Total Commodity 700 (Produce)								\$	-
Grand Total All Commodity								\$	666,208.13